



WARNING
BEWARE OF UNDERGROUND/OVERHEAD SERVICES
THE LOCATION OF SERVICES ARE APPROXIMATE ONLY AND THEIR EXACT POSITION SHOULD BE PROVEN ON SITE. NO GUARANTEE IS GIVEN THAT ALL EXISTING SERVICES ARE SHOWN. SPECIAL CONSIDERATION SHOULD BE GIVEN TO CONSTRUCTION PROCEDURES UNDER OVERHEAD ELECTRICITY TRANSMISSION LINES.

file name: 308941CR200-10.dwg, layout: rmp, CD200, created by: Ousama Tazari, file location: G:\308941\308941\CD\10.dwg, plot date: 17/01/2022, 10:33 AM, Sheet 2 of 16 Sheets

Rev	Amendments	Approved	Date
A	ISSUED FOR APPROVAL	M.H	20/12/21

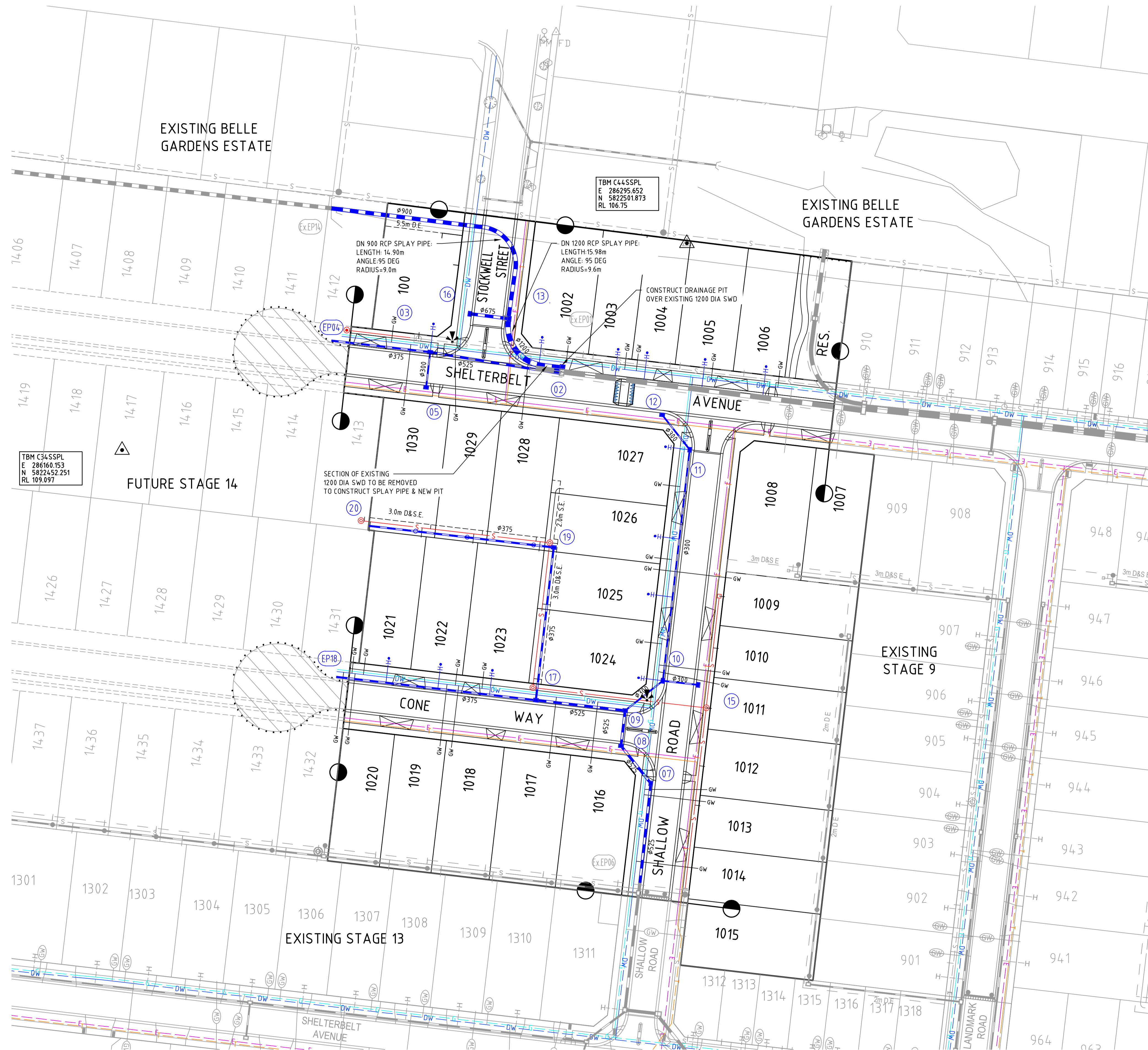


System Certified
 © Spiire Australia Pty Ltd All Rights Reserved
 This document is produced by Spiire Australia Pty Ltd solely for the benefit of and use by the client in accordance with the terms of the retainer. Spiire Australia Pty Ltd does not and shall not assume any responsibility or liability whatsoever to any third party arising out of any use or reliance by third party on the content of this document.

L6 414 LA TROBE STREET PO BOX 16084 MELBOURNE
 VICTORIA 8007 AUSTRALIA T 61 3 9993 7888
 spiire.com.au ABN 55 050 029 635

Designed: O.TRAORE
 Authorised: M.HOLMES
 Checked: []
 Date: DECEMBER 2021

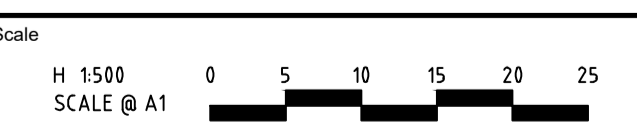
SEVENTH BEND
STAGE 10
ROAD AND DRAINAGE
FACE PLAN
 MELTON CITY COUNCIL
 EXFORD ROAD MANAGEMENT PTY LTD
PRELIMINARY Dwg No: 308941CR200 Rev: A



WARNING
BEWARE OF UNDERGROUND/OVERHEAD SERVICES
THE LOCATION OF SERVICES ARE APPROXIMATE ONLY AND THEIR EXACT POSITION SHOULD BE PROVEN ON SITE. NO GUARANTEE IS GIVEN THAT ALL EXISTING SERVICES ARE SHOWN. SPECIAL CONSIDERATION SHOULD BE GIVEN TO CONSTRUCTION PROCEDURES UNDER OVERHEAD ELECTRICITY TRANSMISSION LINES.

file name: 308941CR201.dwg, layout: rcp, cpo21, created by: Ousama Tazari, file location: G:\308941\308941.dwg, plot date: 17/12/2021 10:37 AM, Sheet 3 of 16 Sheets

Rev	Description	Approved	Date
A	ISSUED FOR APPROVAL	M.H	20/12/21
	Amendments		



System Certified
 © Spiire Australia Pty Ltd All Rights Reserved
 This document is produced by Spiire Australia Pty Ltd solely for the benefit of and use by the client in accordance with the terms of the retainer. Spiire Australia Pty Ltd does not and shall not assume any responsibility or liability whatsoever to any third party arising out of any use or reliance by third party on the content of this document.

L6 414 LA TROBE STREET PO BOX 16084 MELBOURNE
 VICTORIA 3007 AUSTRALIA T 61 3 9993 7888
 spiire.com.au ABN 55 050 029 635

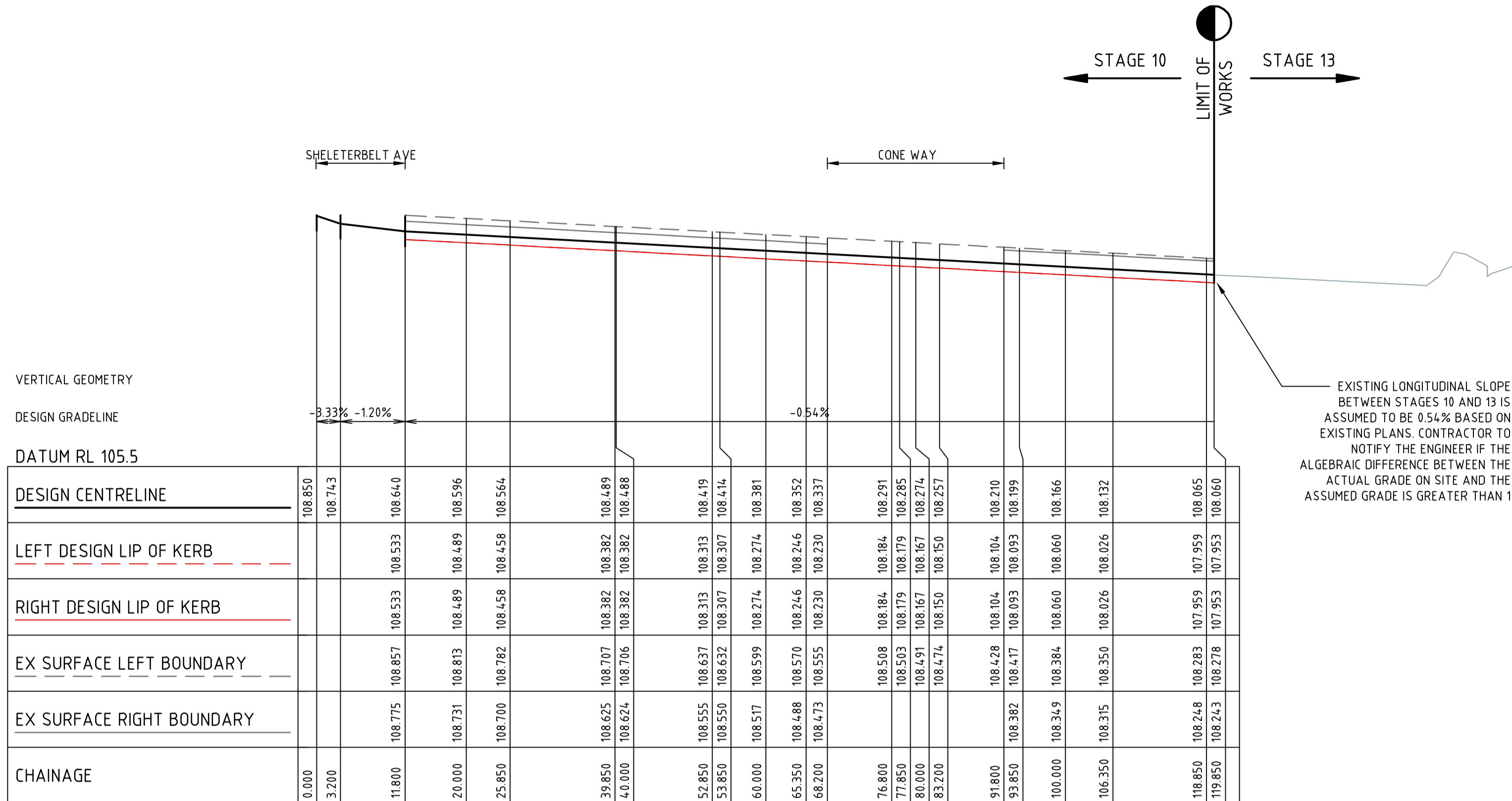
Designed
 O.TRAORE
 Authorised
 M.HOLMES
 Checked
 Date
 DECEMBER 2021

SEVENTH BEND
STAGE 10
ROAD AND DRAINAGE
SERVICES PLAN
 MELTON CITY COUNCIL
 EXFORD ROAD MANAGEMENT PTY LTD
PRELIMINARY

Drg No
308941CR201

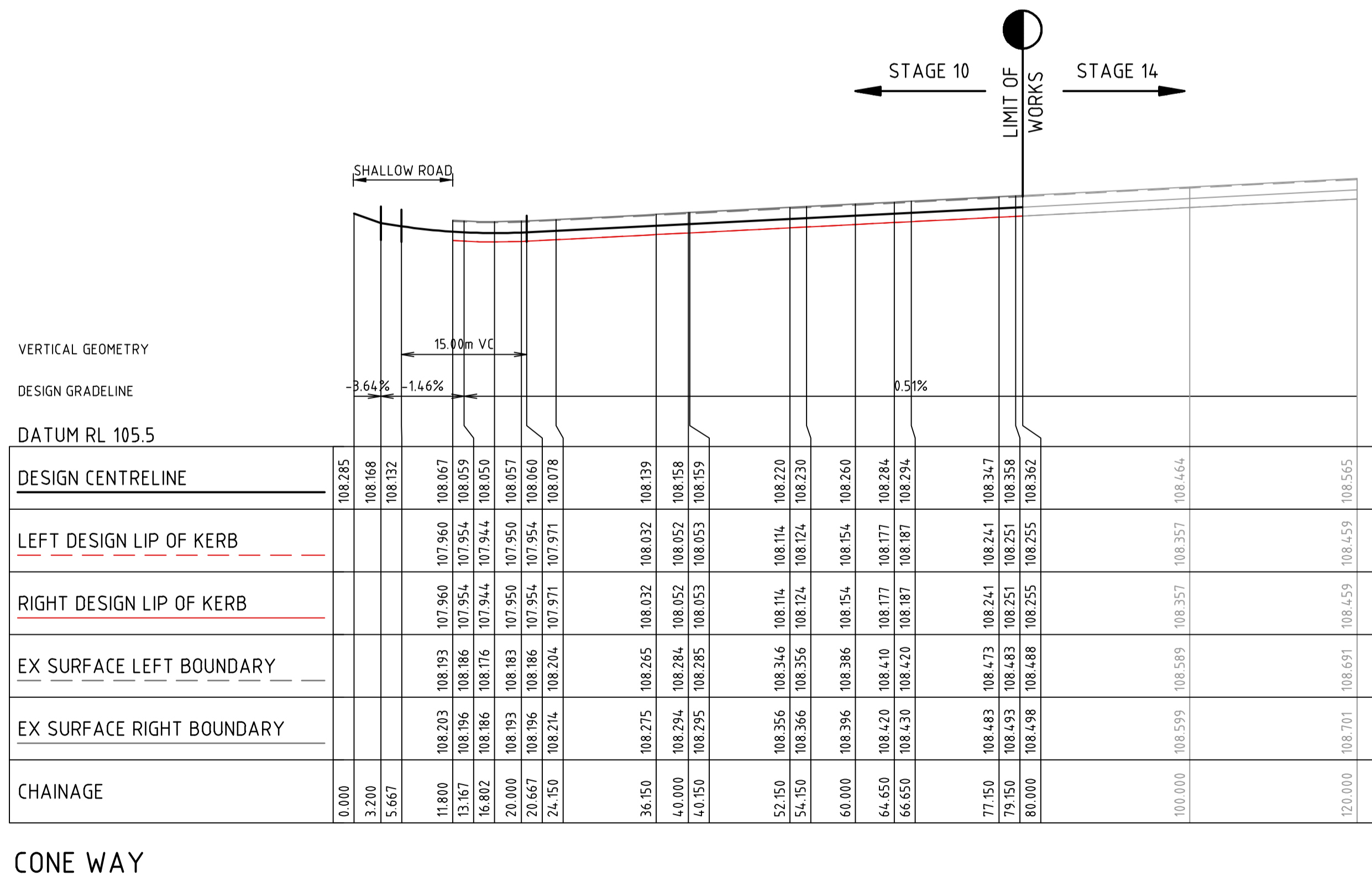
Rev
A

file name: 308941CR301.dwg layout name: CR301 Method by: Overseas Tracer
 file location: G:\308941\308941\308941\308941.dwg plot date: 17/12/2021 4:03:38 AM Sheet 5 of 16 Sheets



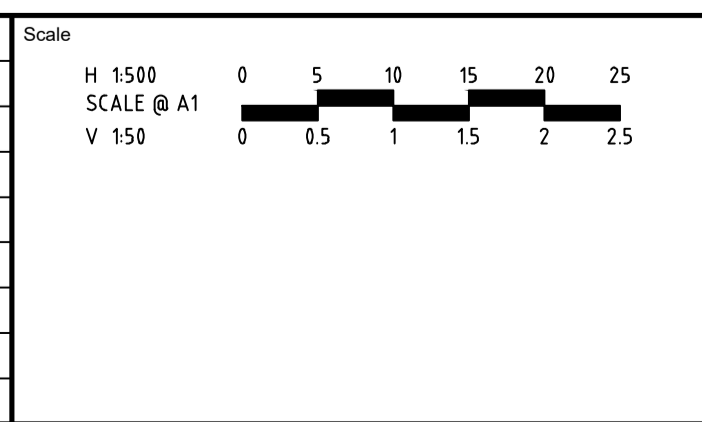
EXISTING LONGITUDINAL SLOPE BETWEEN STAGES 10 AND 13 IS ASSUMED TO BE 0.54% BASED ON EXISTING PLANS. CONTRACTOR TO NOTIFY THE ENGINEER IF THE ALGEBRAIC DIFFERENCE BETWEEN THE ACTUAL GRADE ON SITE AND THE ASSUMED GRADE IS GREATER THAN 1

SHALLOW ROAD



CONE WAY

Rev	Amendments	Approved	Date
A	ISSUED FOR APPROVAL	M.H	20/12/21



System Certified

 © Spiire Australia Pty Ltd All Rights Reserved

 This document is produced by Spiire Australia Pty Ltd solely for the benefit of and use by the client in accordance with the terms of the retainer. Spiire Australia Pty Ltd does not and shall not assume any responsibility or liability whatsoever to any third party arising out of any use or reliance by third party on the content of this document.

L6 414 LA TROBE STREET PO BOX 16084 MELBOURNE
 VICTORIA 8007 AUSTRALIA T 61 3 9993 7888
 spiire.com.au ABN 55 050 029 635

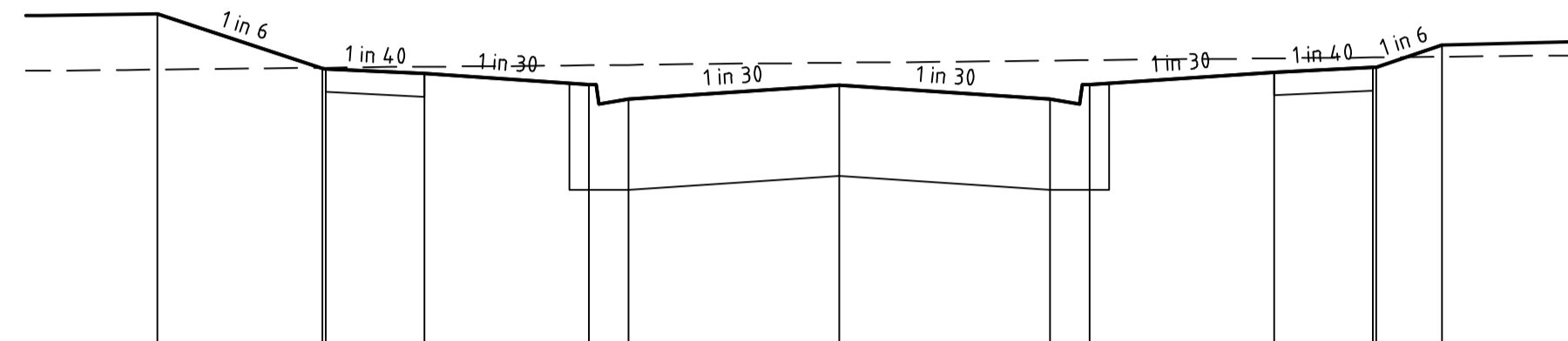
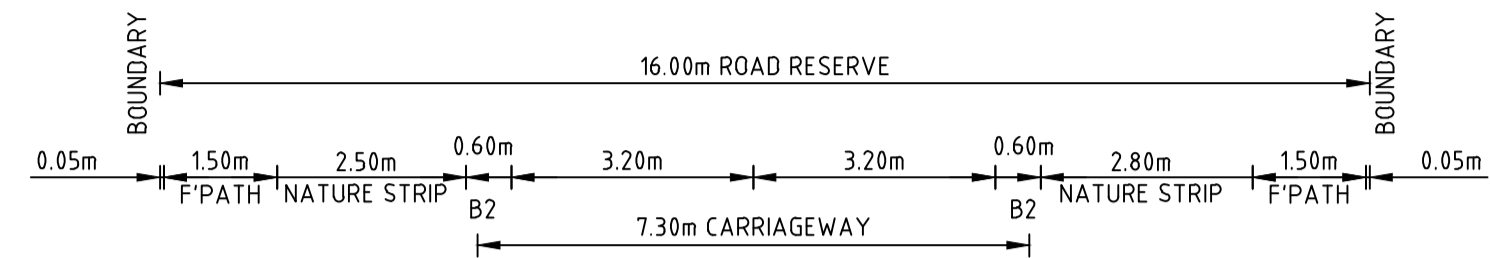
Designed: O.TRAORE
 Authorised: M.HOLMES
 Checked: [Signature]
 Date: DECEMBER 2021

SEVENTH BEND
STAGE 10
 ROAD AND DRAINAGE
 ROAD LONG SECTIONS - SHEET 2
 MELTON CITY COUNCIL
 EXFORD ROAD MANAGEMENT PTY LTD
PRELIMINARY

Drg No: 308941CR301
 Rev: A

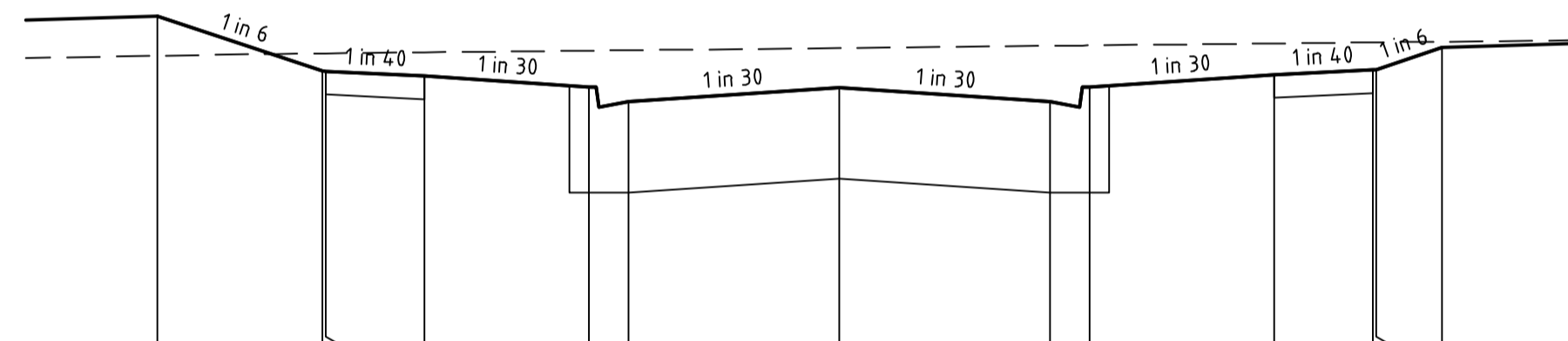
FILLING NOTE
 ALL FILLING WITHIN ROAD RESERVES IS TO BE UNDERTAKEN USING LEVEL 1 SUPERVISION AND BE COMPLETED IN ACCORDANCE WITH AS 3798-2007 AND TO THE SATISFACTION OF COUNCIL AND THE SUPERINTENDENT. FILL AREAS ARE TO BE STRIPPED OF TOPSOIL, FILLED AND REPLACED WITH TOPSOIL (WHERE REQUIRED) TO OBTAIN THE FINAL LEVELS SHOWN ON THE DRAWINGS.

 STRUCTURAL FILL IN ACCORDANCE WITH AS3798-2007, LEVEL 1



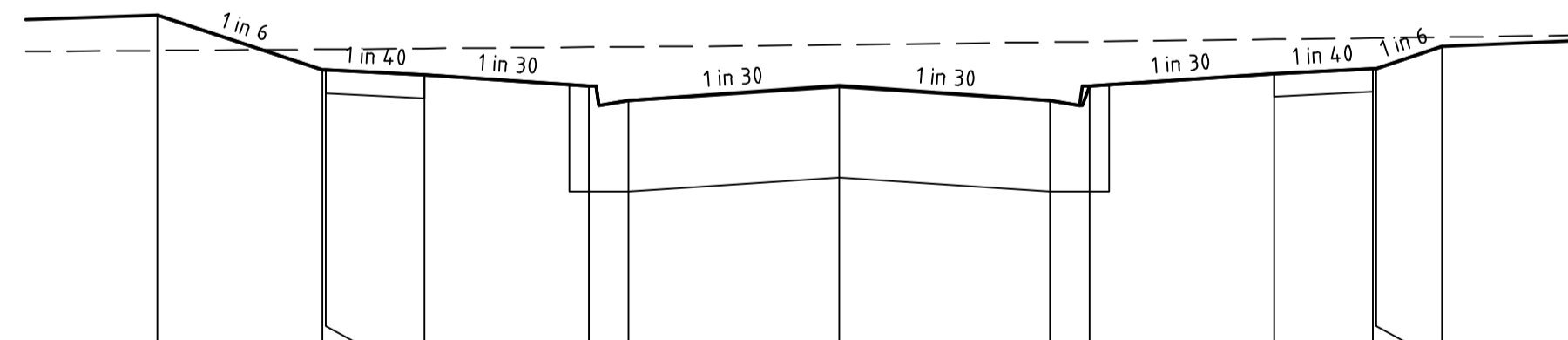
DATUM R.L.106.0	
DESIGN SURFACE LEVEL	108.826, 108.410, 108.408, 108.370, 108.287, 108.284, 108.177, 108.287, 108.380, 108.418, 108.420, 108.586
EXISTING SURFACE LEVEL	108.402, 108.416, 108.416, 108.424, 108.435, 108.454, 108.470, 108.473, 108.487, 108.494, 108.495, 108.500
OFFSET	-10.350, -7.850, -7.800, -6.300, -3.800, -3.200, 0.000, 3.200, 3.800, 6.600, 8.100, 8.150, 9.150

CONE WAY CH 64.65



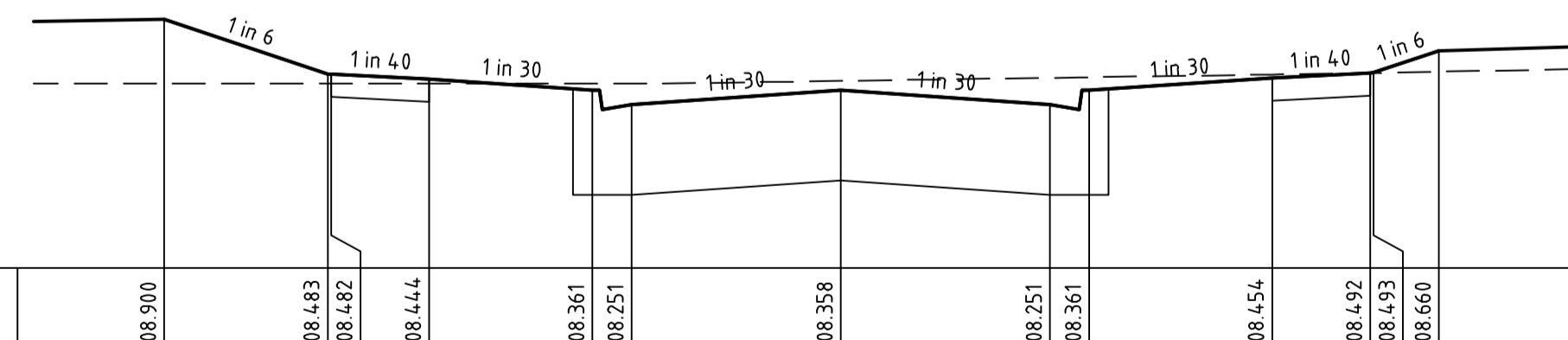
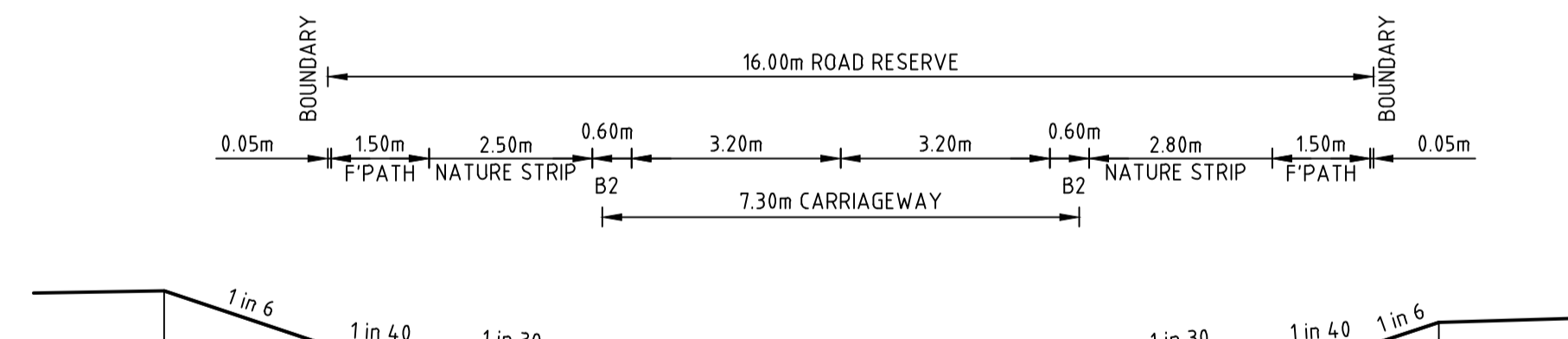
DATUM R.L.106.0	
DESIGN SURFACE LEVEL	108.681, 108.265, 108.263, 108.225, 108.142, 108.139, 108.032, 108.142, 108.235, 108.273, 108.275, 108.441
EXISTING SURFACE LEVEL	108.380, 108.398, 108.398, 108.406, 108.419, 108.422, 108.439, 108.456, 108.473, 108.481, 108.482, 108.487
OFFSET	-10.350, -7.850, -7.800, -6.300, -3.800, -3.200, 0.000, 3.200, 3.800, 6.600, 8.100, 8.150, 9.150

CONE WAY CH 36.15



DATUM R.L.106.0	
DESIGN SURFACE LEVEL	108.609, 108.193, 108.191, 108.153, 108.070, 108.067, 107.960, 108.070, 108.163, 108.201, 108.203, 108.369
EXISTING SURFACE LEVEL	108.339, 108.349, 108.349, 108.355, 108.365, 108.367, 108.382, 108.403, 108.406, 108.434, 108.434, 108.440
OFFSET	-10.350, -7.850, -7.800, -6.300, -3.800, -3.200, 0.000, 3.200, 3.800, 6.600, 8.100, 8.150, 9.150

CONE WAY CH 11.80

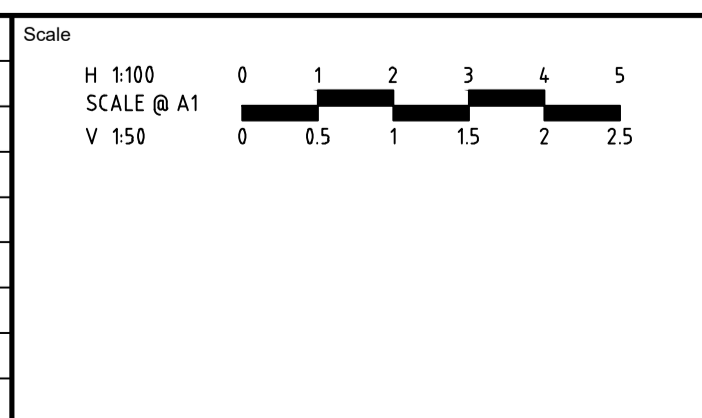



DATUM R.L.107.0	
DESIGN SURFACE LEVEL	108.900, 108.483, 108.482, 108.444, 108.361, 108.251, 108.358, 108.251, 108.361, 108.454, 108.492, 108.493, 108.660
EXISTING SURFACE LEVEL	108.410, 108.410, 108.410, 108.410, 108.410, 108.410, 108.430, 108.453, 108.458, 108.479, 108.491, 108.491, 108.500
OFFSET	-10.350, -7.850, -7.800, -6.300, -3.800, -3.200, 0.000, 3.200, 3.800, 6.600, 8.100, 8.150, 9.150

CONE WAY CH 79.15


file name: 308941CR401.dwg, layout name: CR401, plotted by: Ousman, Teezee, file location: G:\308941\civil\A1\A1.dwg, plot date: 17/07/2022, 10:33 AM, Sheet 1 of 16 Sheets

Rev	Description	Approved	Date
A	ISSUED FOR APPROVAL	M.H	20/12/21
	Amendments		




 System Certified
 © Spiire Australia Pty Ltd All Rights Reserved
 This document is produced by Spiire Australia Pty Ltd solely for the benefit of and use by the client in accordance with the terms of the retainer. Spiire Australia Pty Ltd does not and shall not assume any responsibility or liability whatsoever to any third party arising out of any use or reliance by third party on the content of this document.

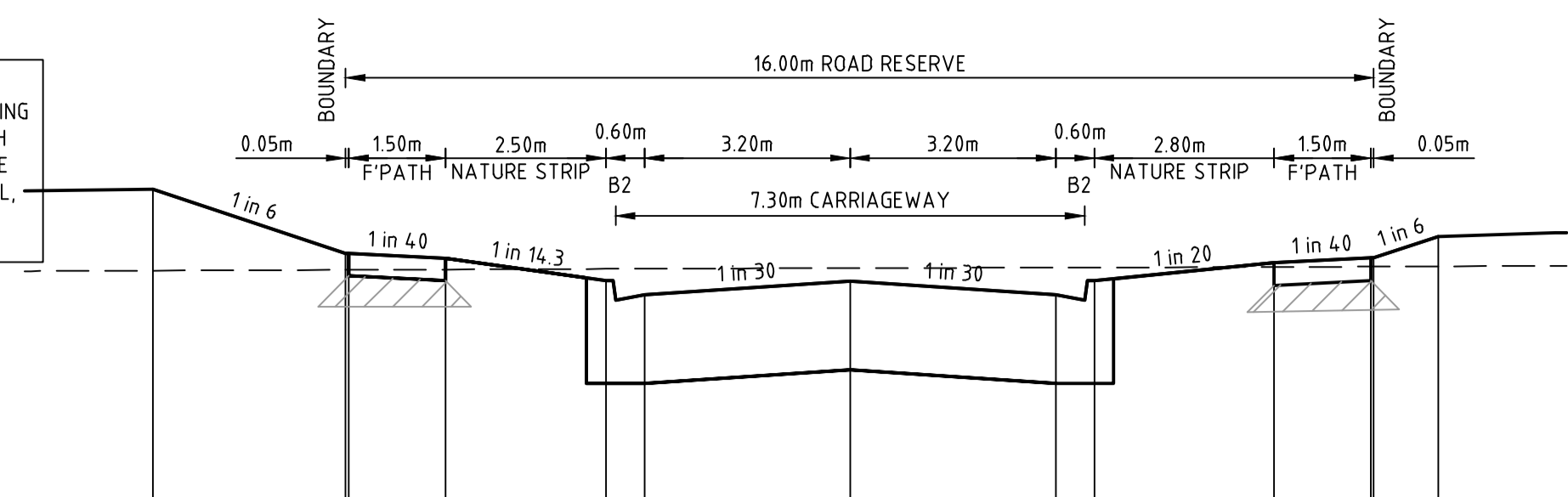

 L6 414 LA TROBE STREET PO BOX 16084 MELBOURNE
 VICTORIA 8007 AUSTRALIA T 61 3 9993 7888
 spiire.com.au ABN 55 050 029 635


 Designed
 O.TRAORE
 Authorised
 M.HOLMES
 Checked
 Date
 DECEMBER 2021

SEVENTH BEND
STAGE 10
 ROAD AND DRAINAGE
 ROAD CROSS SECTIONS - SHEET 2
 MELTON CITY COUNCIL
 EXFORD ROAD MANAGEMENT PTY LTD
PRELIMINARY Drg No 308941CR401 Rev A

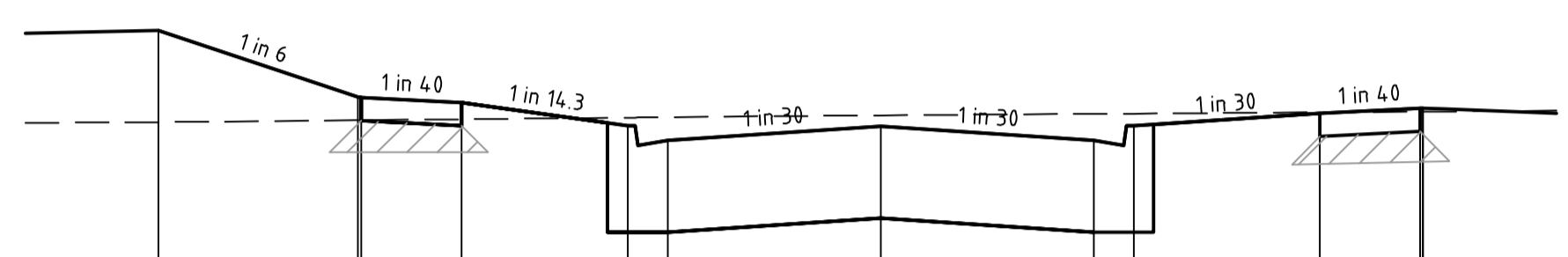
FILLING NOTE
 ALL FILLING WITHIN ROAD RESERVES IS TO BE UNDERTAKEN USING LEVEL 1 SUPERVISION AND BE COMPLETED IN ACCORDANCE WITH AS 3798-2007 AND TO THE SATISFACTION OF COUNCIL AND THE SUPERINTENDENT. FILL AREAS ARE TO BE STRIPPED OF TOPSOIL, FILLED AND REPLACED WITH TOPSOIL (WHERE REQUIRED) TO OBTAIN THE FINAL LEVELS SHOWN ON THE DRAWINGS.

 STRUCTURAL FILL IN ACCORDANCE WITH AS3798-2007, LEVEL 1



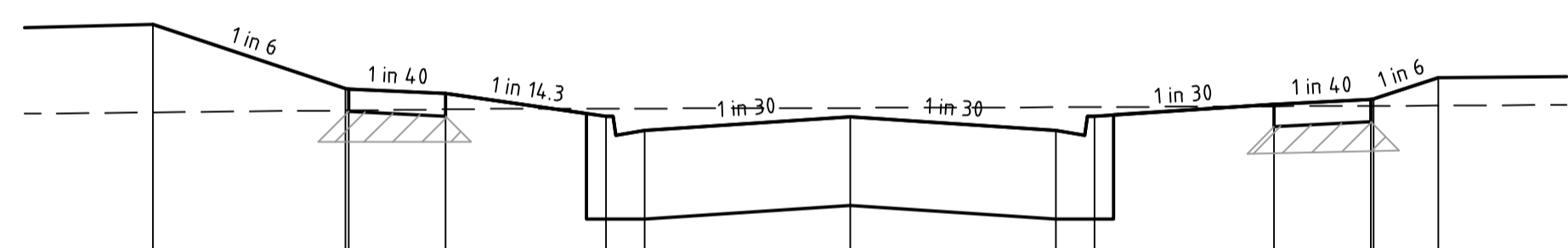
DATUM R.L.106.0	
DESIGN SURFACE LEVEL	-10.850 108.928
EXISTING SURFACE LEVEL	-7.850 108.299 108.428
OFFSET	-10.850 108.293 108.426

SHALLOW ROAD CH 91.80



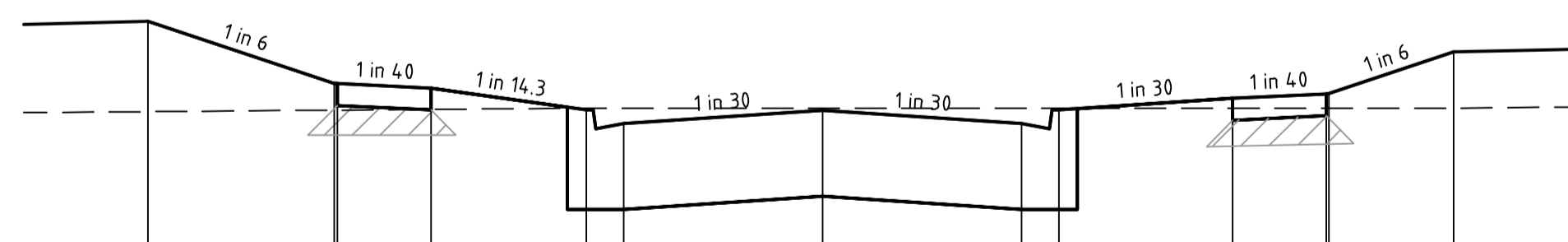
DATUM R.L.107.0	
DESIGN SURFACE LEVEL	-10.850 108.367 109.055
EXISTING SURFACE LEVEL	-7.850 108.381 108.555
OFFSET	-10.850 108.367 108.553

SHALLOW ROAD CH 68.20



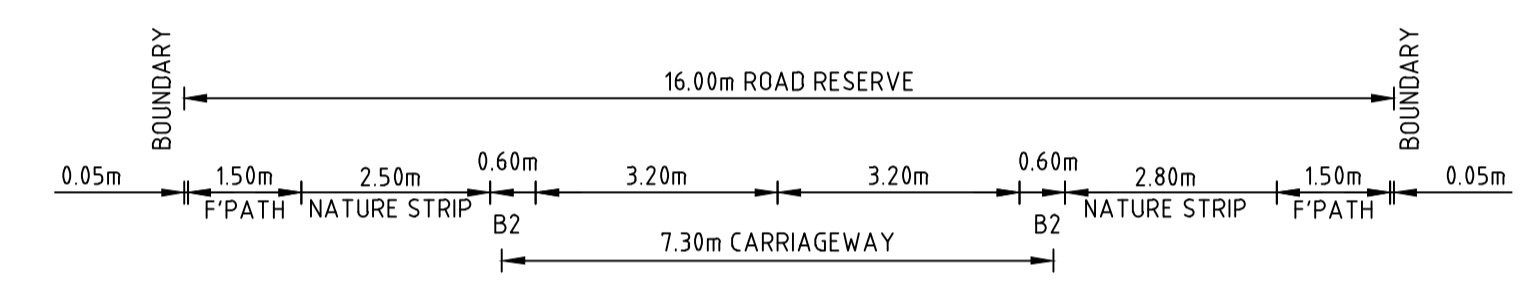
DATUM R.L.107.0	
DESIGN SURFACE LEVEL	-10.850 108.521 109.207
EXISTING SURFACE LEVEL	-7.850 108.537 108.707
OFFSET	-10.850 108.521 108.705

SHALLOW ROAD CH 39.85



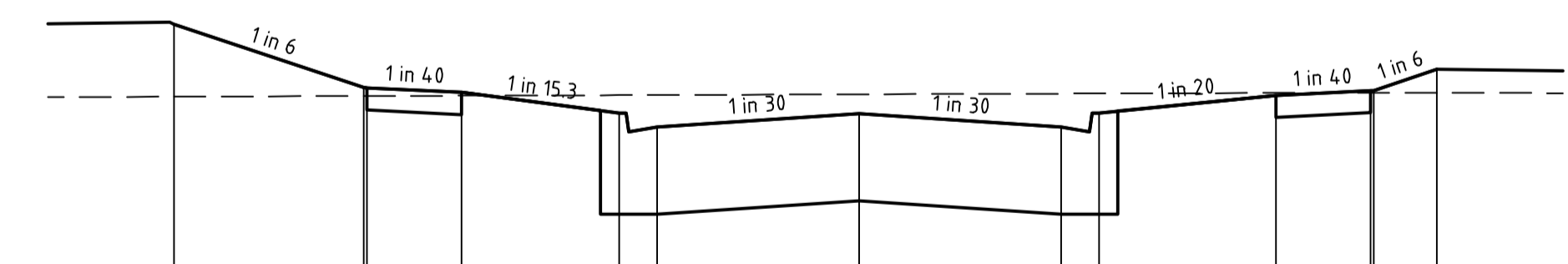
DATUM R.L.107.0	
DESIGN SURFACE LEVEL	-10.850 108.630 109.357
EXISTING SURFACE LEVEL	-7.850 108.642 108.857
OFFSET	-10.850 108.630 108.855

SHALLOW ROAD CH 11.80



DATUM R.L.106.0	
DESIGN SURFACE LEVEL	-14.273 108.195 108.195
EXISTING SURFACE LEVEL	-10.850 108.196 108.765
OFFSET	-14.273 108.195 108.765

SHALLOW ROAD CH 119.85

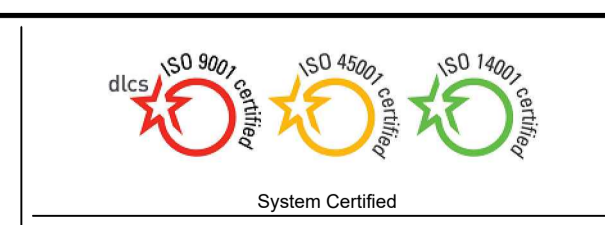
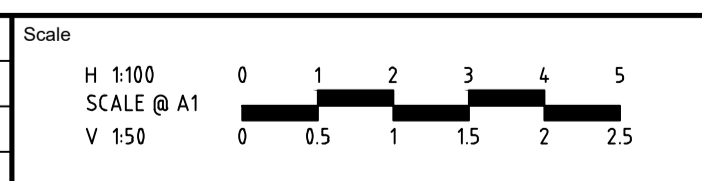


DATUM R.L.106.0	
DESIGN SURFACE LEVEL	-10.850 108.198 108.771
EXISTING SURFACE LEVEL	-7.850 108.203 108.271
OFFSET	-10.850 108.198 108.271

SHALLOW ROAD CH 118.85

file name: 308941CR402.dwg, layout name: CR402, plotted by: Quynh Tran, file location: G:\308941\308941\Drawings\308941\308941.dwg, plot date: 17/07/2022, L03:AM, Sheet: 8 of 16 Sheets

A ISSUED FOR APPROVAL	
Rev	Amendments
M.H	20/12/21
Approved	Date



© Spiire Australia Pty Ltd All Rights Reserved
 This document is produced by Spiire Australia Pty Ltd solely for the benefit of and use by the client in accordance with the terms of the retainer. Spiire Australia Pty Ltd does not and shall not assume any responsibility or liability whatsoever to any third party arising out of any use or reliance by third party on the content of this document.



L6 414 LA TROBE STREET PO BOX 16084 MELBOURNE VICTORIA 3007 AUSTRALIA T 61 3 9993 7888 spiire.com.au ABN 55 050 029 635

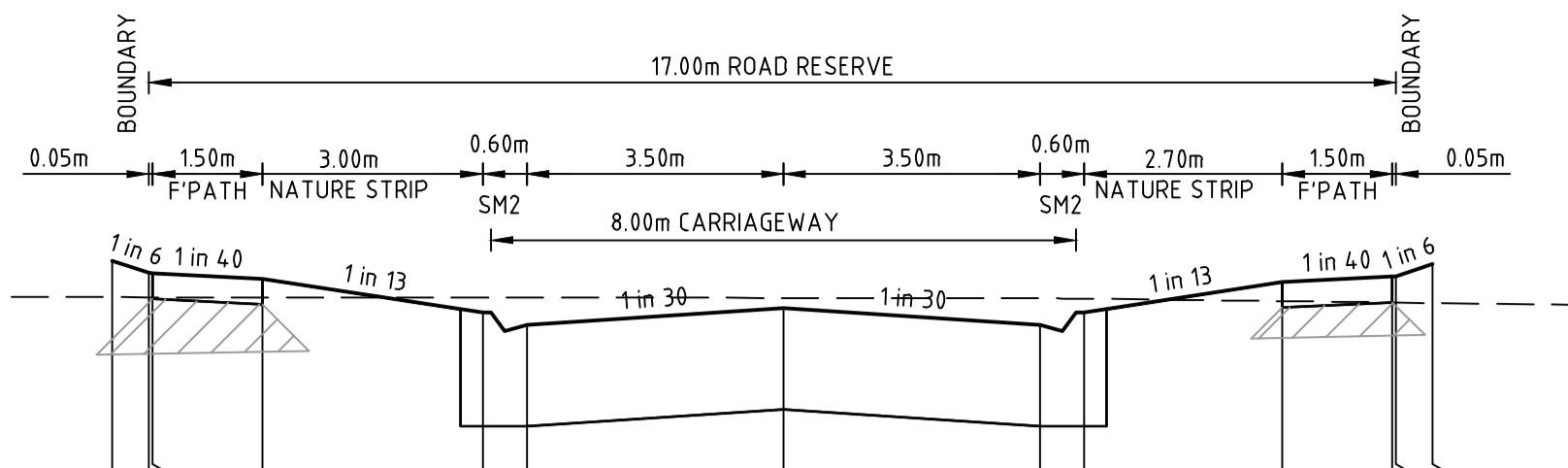


Designed O.TRAORE
 Authorised M.HOLMES
 Checked
 Date DECEMBER 2021

SEVENTH BEND STAGE 10 ROAD AND DRAINAGE ROAD CROSS SECTIONS - SHEET 3
 MELTON CITY COUNCIL EXFORD ROAD MANAGEMENT PTY LTD
PRELIMINARY Drg No 308941CR402 Rev A

FILLING NOTE
 ALL FILLING WITHIN ROAD RESERVES IS TO BE UNDERTAKEN USING LEVEL 1 SUPERVISION AND BE COMPLETED IN ACCORDANCE WITH AS 3798-2007, AND TO THE SATISFACTION OF COUNCIL AND THE SUPERINTENDENT. FILL AREAS ARE TO BE STRIPPED OF TOPSOIL, FILLED AND REPLACED WITH TOPSOIL (WHERE REQUIRED) TO OBTAIN THE FINAL LEVELS SHOWN ON THE DRAWINGS.

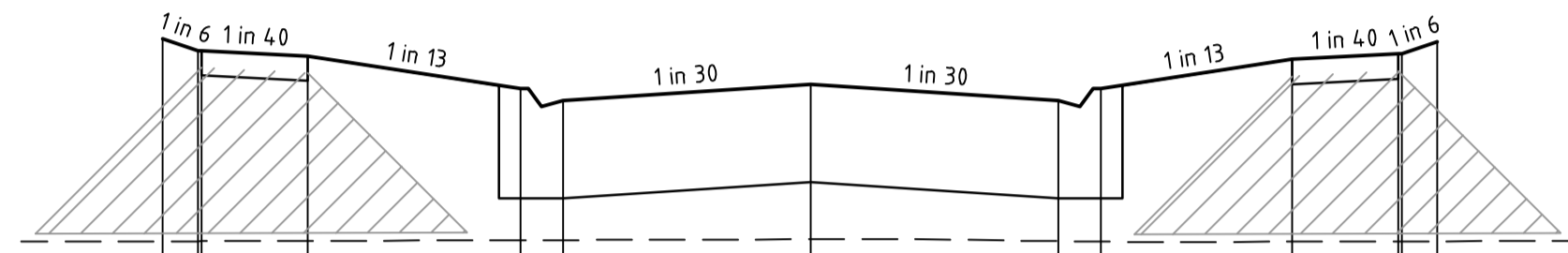
STRUCTURAL FILL IN ACCORDANCE WITH AS3798-2007, LEVEL 1



DATUM R.L.108.0	
DESIGN SURFACE LEVEL	109.637, 109.554, 109.515, 109.284, 109.199, 109.316, 109.199, 109.284, 109.492, 109.529, 109.531, 109.614
EXISTING SURFACE LEVEL	109.389, 109.388, 109.388, 109.388, 109.386, 109.284, 109.386, 109.199, 109.382, 109.378, 109.382, 109.492, 109.353, 109.353, 109.531, 109.350, 109.614
OFFSET	-9.150, -8.650, -8.600, -7.100, -4.100, -3.500, 0.000, 3.500, 4.100, 6.800, 8.300, 8.350, 8.850

STOCKWELL STREET

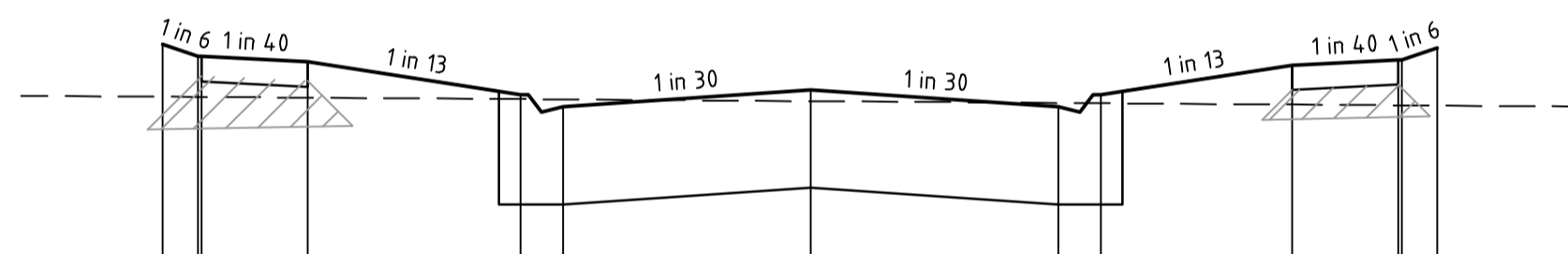
CH 38.34



DATUM R.L.107.0	
DESIGN SURFACE LEVEL	109.565, 109.482, 109.443, 109.212, 109.127, 109.244, 109.127, 109.212, 109.420, 109.457, 109.459, 109.542
EXISTING SURFACE LEVEL	108.136, 108.136, 108.136, 108.136, 108.143, 108.144, 108.144, 108.137, 108.133, 108.133, 108.135, 108.135, 108.136, 108.136, 108.136, 108.136, 109.542
OFFSET	-9.150, -8.650, -8.600, -7.100, -4.100, -3.500, 0.000, 3.500, 4.100, 6.800, 8.300, 8.350, 8.850

STOCKWELL STREET

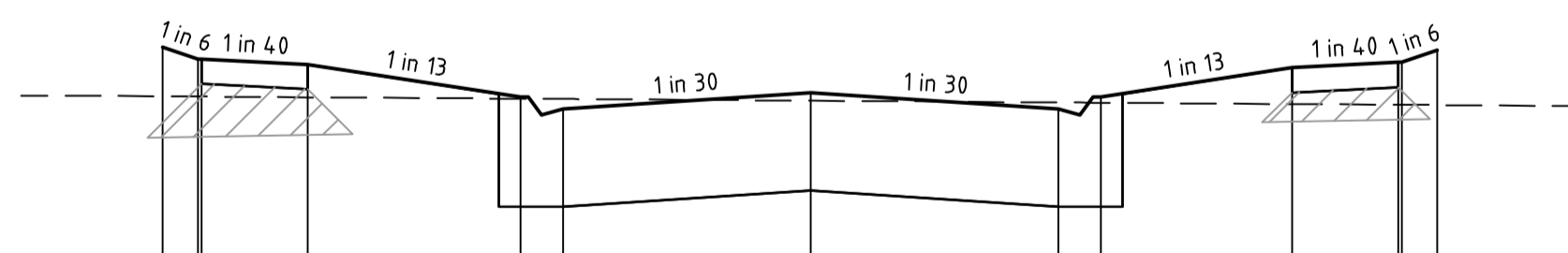
CH 32.84



DATUM R.L.107.0	
DESIGN SURFACE LEVEL	109.324, 109.241, 109.202, 109.971, 108.886, 109.003, 108.886, 108.971, 109.179, 109.216, 109.218, 109.301
EXISTING SURFACE LEVEL	108.956, 108.954, 108.954, 108.949, 108.939, 108.937, 108.937, 108.912, 108.910, 108.901, 108.896, 108.895, 108.894, 108.894, 108.894, 109.301
OFFSET	-9.150, -8.650, -8.600, -7.100, -4.100, -3.500, 0.000, 3.500, 4.100, 6.800, 8.300, 8.350, 8.850

STOCKWELL STREET

CH 14.45



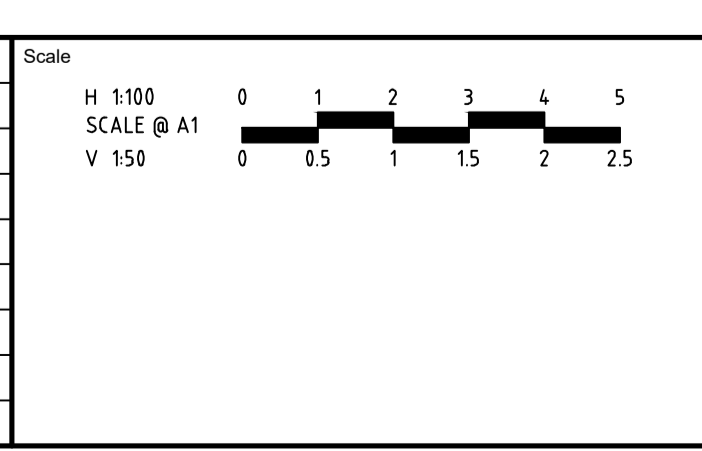
DATUM R.L.107.0	
DESIGN SURFACE LEVEL	109.291, 109.208, 109.206, 109.169, 108.938, 108.853, 108.969, 108.853, 108.938, 109.145, 109.183, 109.185, 109.268
EXISTING SURFACE LEVEL	108.944, 108.942, 108.942, 108.937, 108.927, 108.925, 108.913, 108.901, 108.898, 108.889, 108.884, 108.884, 108.882, 108.882, 109.268
OFFSET	-9.150, -8.650, -8.600, -7.100, -4.100, -3.500, 0.000, 3.500, 4.100, 6.800, 8.300, 8.350, 8.850

STOCKWELL STREET

CH 11.90

file name: 308941CR403.dwg, layout name: CR403, plotted by: Ousama Tassew, file location: \\spire\media\data\308941\308941.dwg, plot date: 17/07/2022 4:03 AM, Sheet 9 of 16 Sheets

Rev	Description	Approved	Date
A	ISSUED FOR APPROVAL	M.H	20/12/21
	Amendments		



System Certified

© Spiire Australia Pty Ltd All Rights Reserved
 This document is produced by Spiire Australia Pty Ltd solely for the benefit of and use by the client in accordance with the terms of the retainer. Spiire Australia Pty Ltd does not and shall not assume any responsibility or liability whatsoever to any third party arising out of any use or reliance by third party on the content of this document.

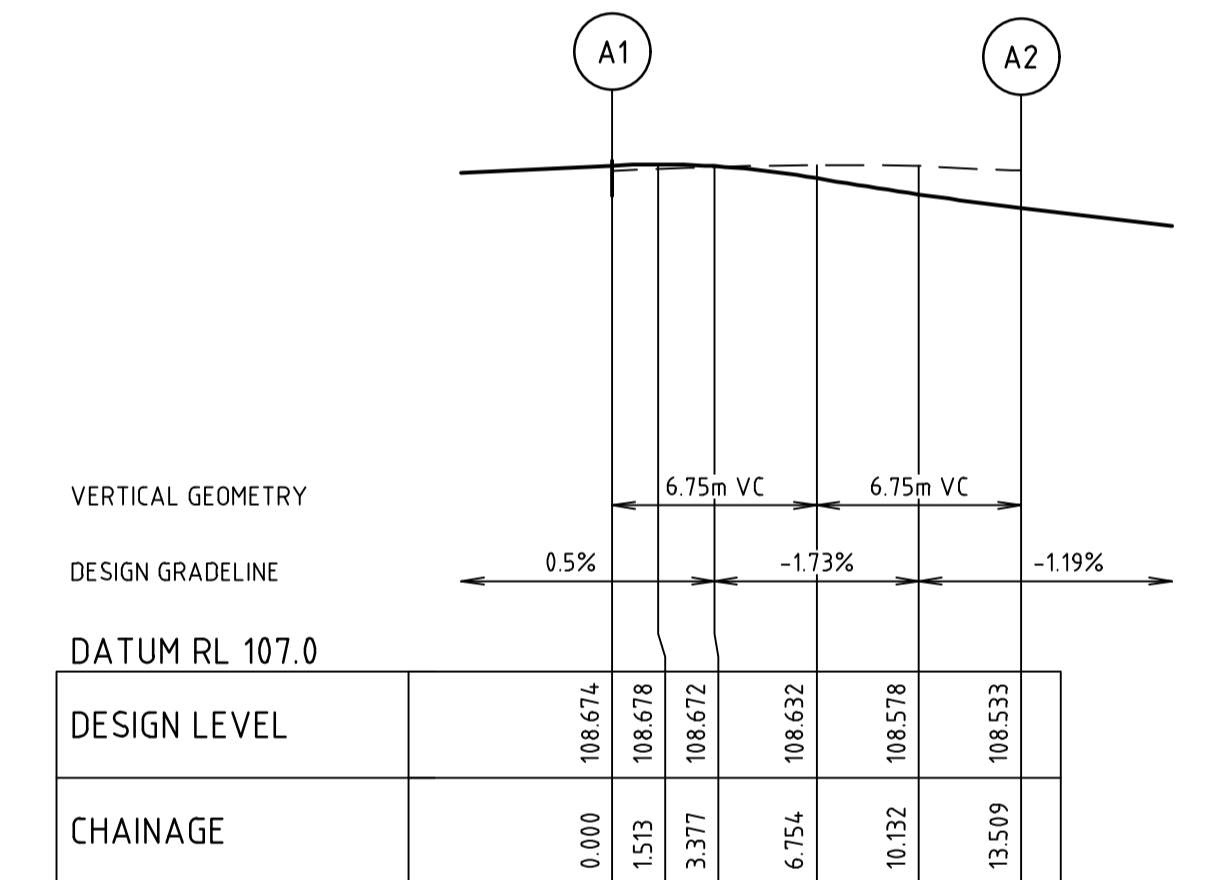
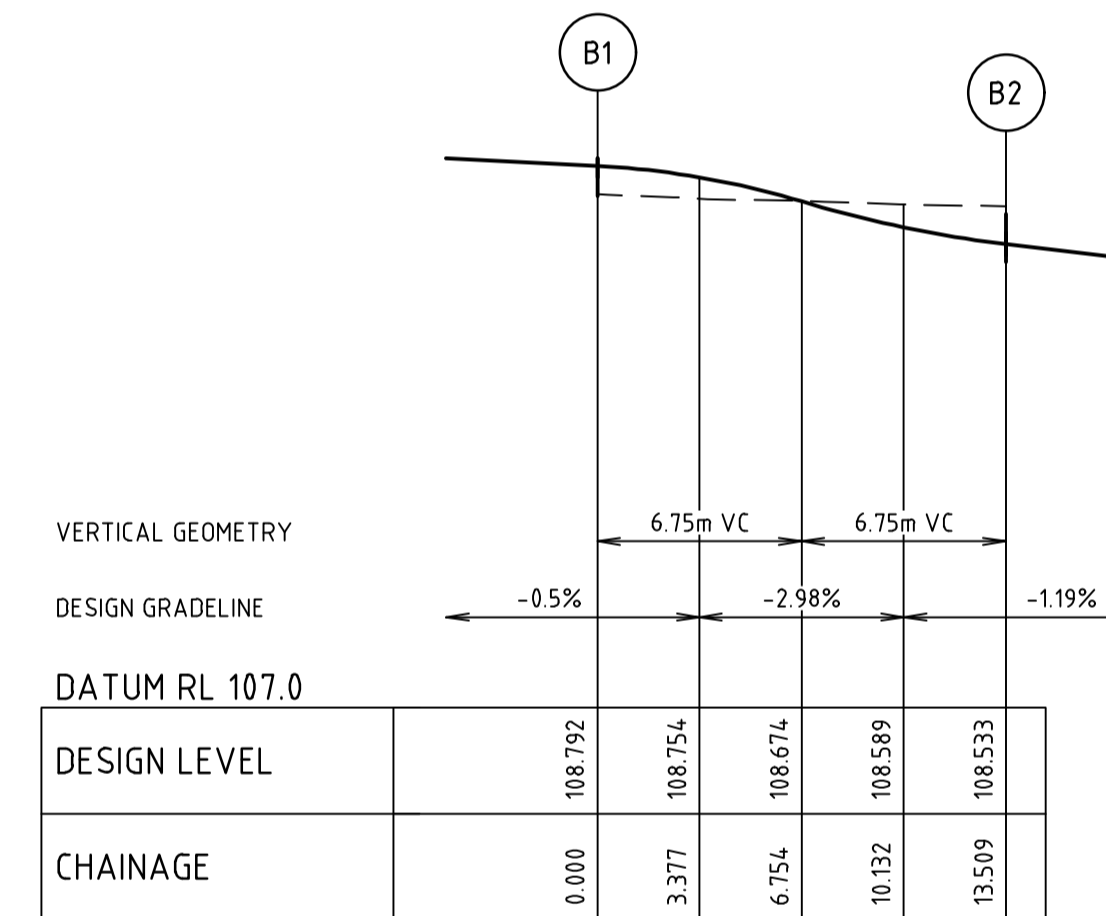
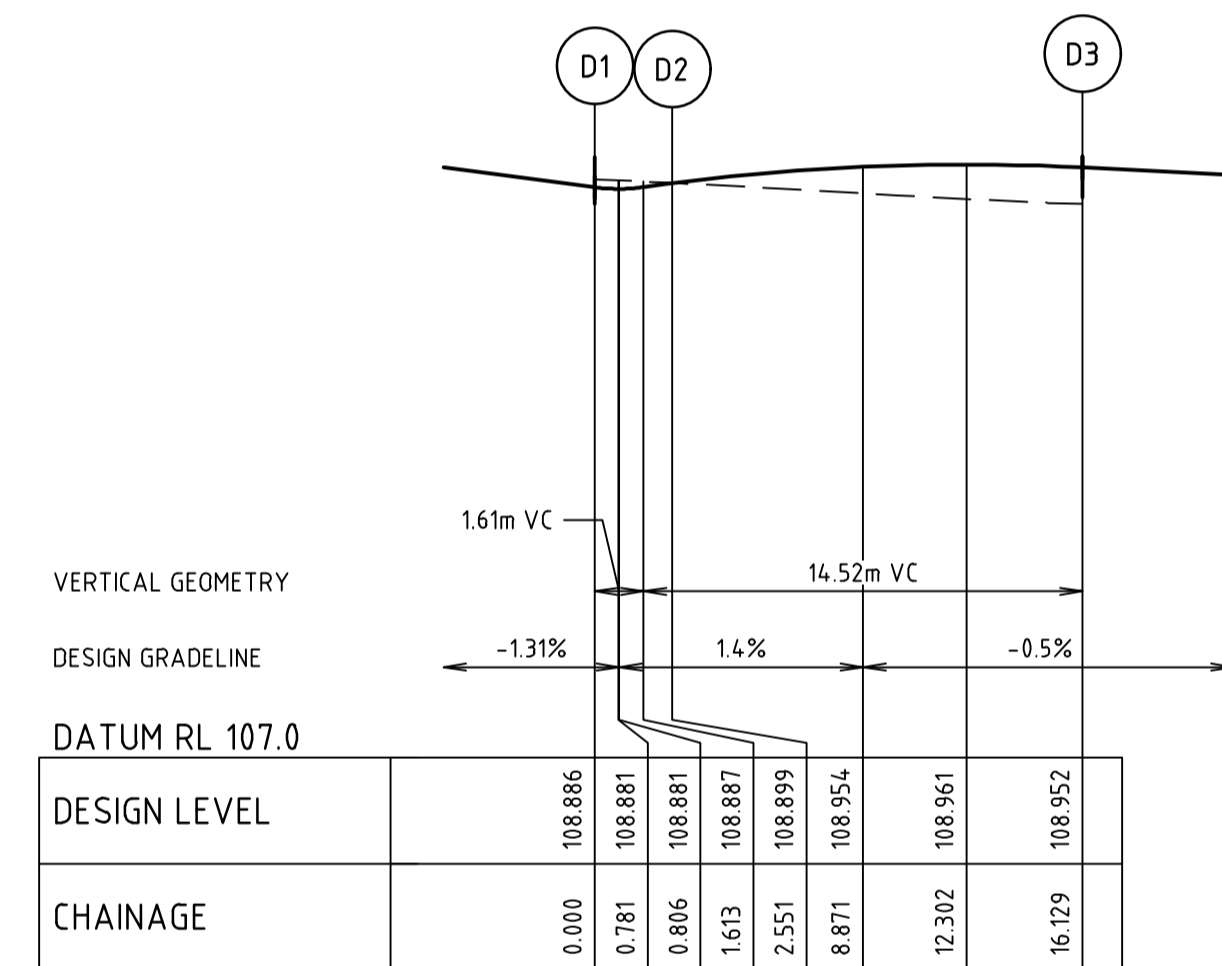
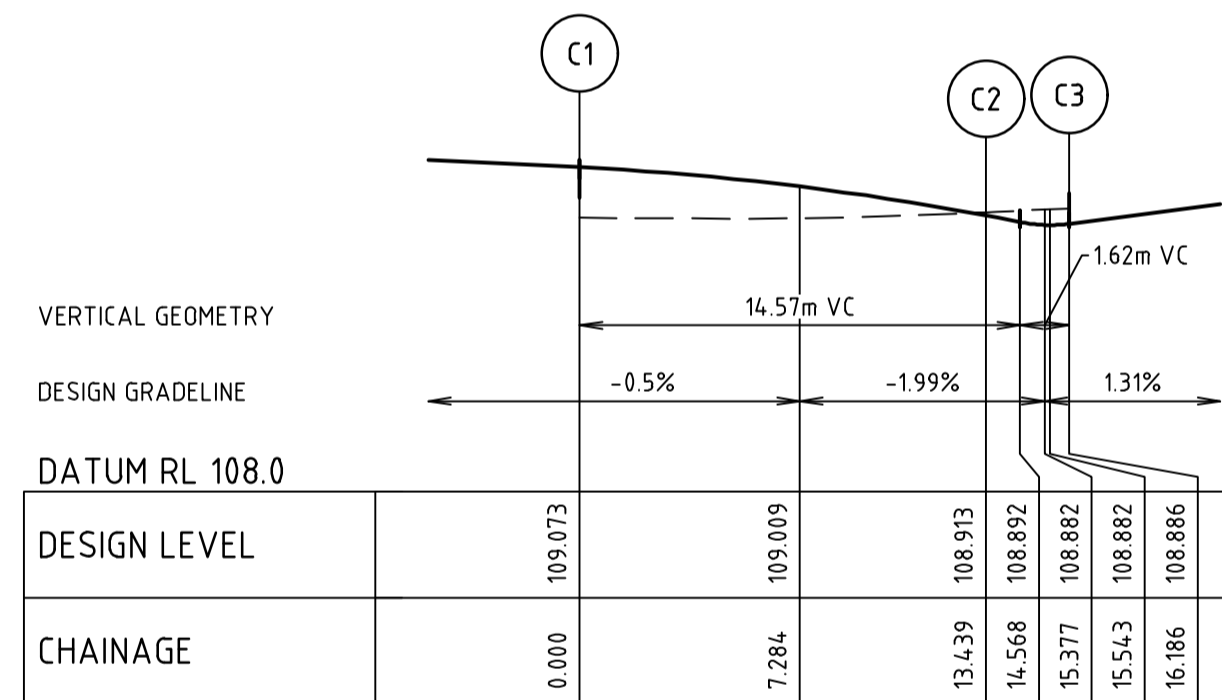
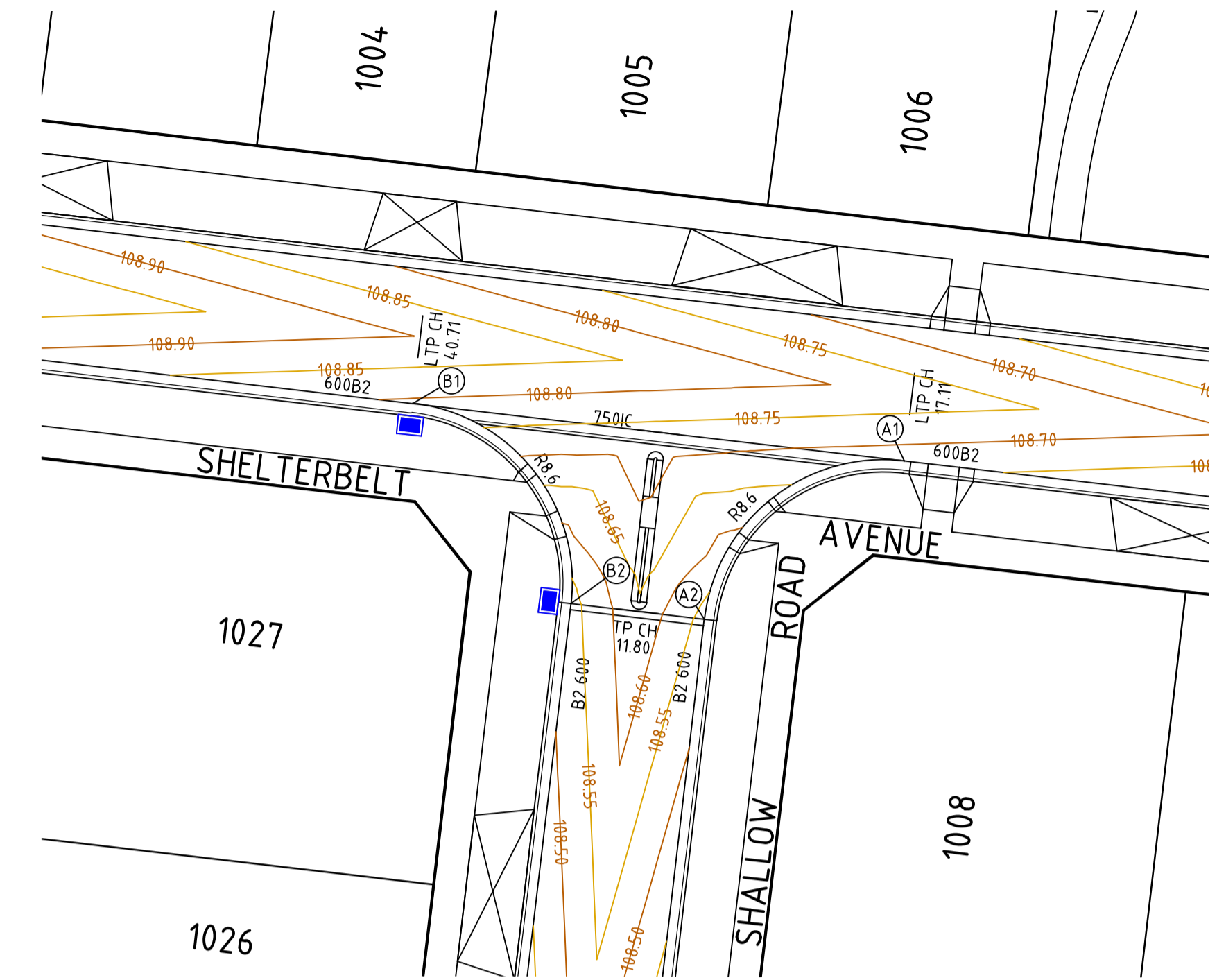
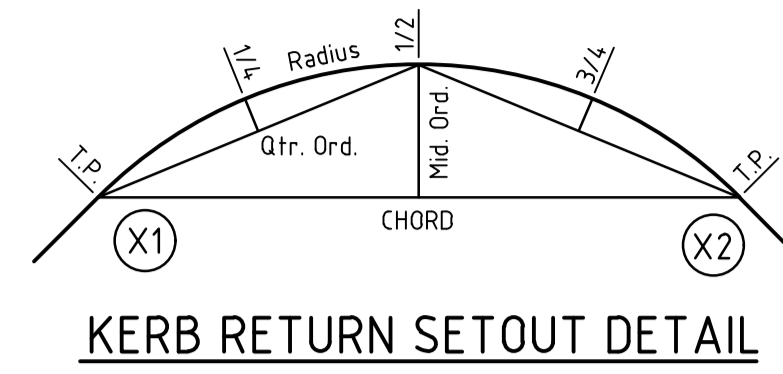
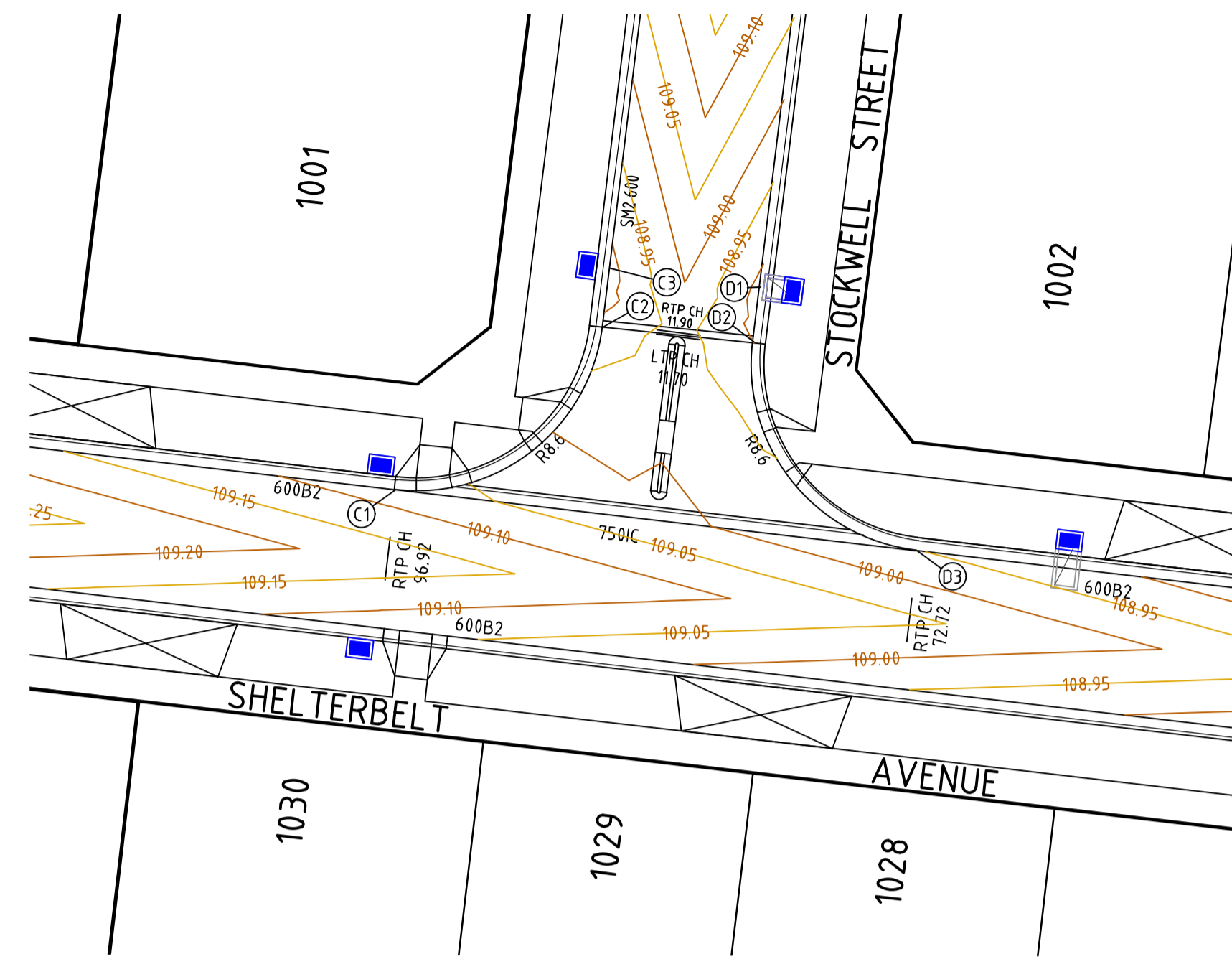
L6 414 LA TROBE STREET PO BOX 16084 MELBOURNE
 VICTORIA 3007 AUSTRALIA T 61 3 9993 7888
 spiire.com.au ABN 55 050 029 635

Designed: O.TRAORE
 Authorised: M.HOLMES
 Checked: []
 Date: DECEMBER 2021

SEVENTH BEND
STAGE 10
 ROAD AND DRAINAGE
 ROAD CROSS SECTIONS - SHEET 4
 MELTON CITY COUNCIL
 EXFORD ROAD MANAGEMENT PTY LTD

PRELIMINARY

Drg No: 308941CR403
 Rev: A



ALIGNMENT C

POINT NO	EASTING	NORTHING	RL
C1	286234.756	5822474.626	109.073
1/4	286238.084	5822474.890	109.050
1/2	286241.061	5822476.402	109.016
3/4	286243.238	5822478.933	108.971
C2	286244.286	5822482.102	108.913
C3	286244.627	5822484.828	108.886

CURVE	RADIUS	ARC L	CHORD	MID ORD	QTR ORD
C1-C2	8.600	13.439	12.113	2.494	-0.648

ALIGNMENT D

POINT NO	EASTING	NORTHING	RL
D1	286251.573	5822483.961	108.886
D2	286251.257	5822481.430	108.899
1/4	286251.503	5822478.066	108.935
1/2	286253.024	5822475.056	108.956
3/4	286255.586	5822472.862	108.961
D3	286258.794	5822471.822	108.952

CURVE	RADIUS	ARC L	CHORD	MID ORD	QTR ORD
D2-D3	8.600	13.578	12.211	2.544	-0.661

ALIGNMENT B

POINT NO	EASTING	NORTHING	RL
B1	286289.848	5822461.757	108.792
1/4	286293.041	5822460.725	108.754
1/2	286295.596	5822458.550	108.674
3/4	286297.124	5822455.563	108.589
B2	286297.393	5822452.218	108.533

CURVE	RADIUS	ARC L	CHORD	MID ORD	QTR ORD
B1-B2	8.600	13.509	12.162	2.519	0.655

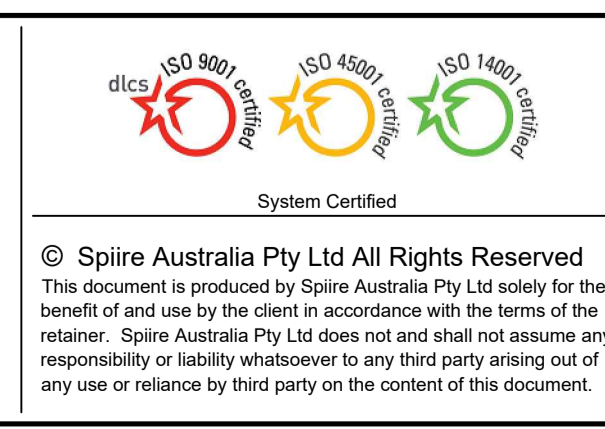
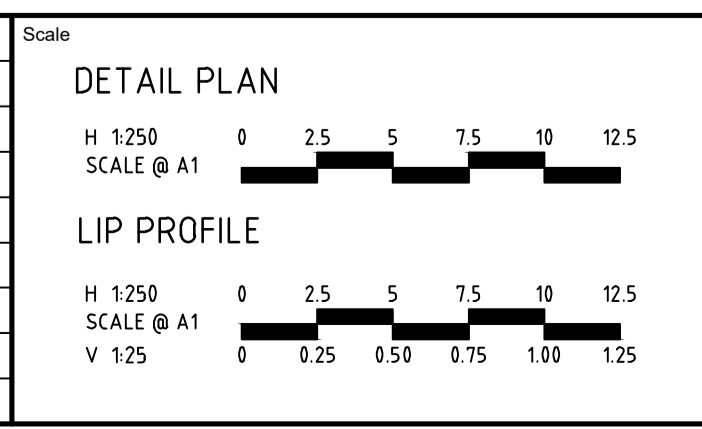
ALIGNMENT A

POINT NO	EASTING	NORTHING	RL
A1	286313.289	5822459.023	108.674
1/4	286309.944	5822458.754	108.672
1/2	286306.957	5822457.225	108.632
3/4	286304.782	5822454.670	108.578
A2	286303.750	5822451.477	108.533

CURVE	RADIUS	ARC L	CHORD	MID ORD	QTR ORD
A1-A2	8.600	13.509	12.162	2.519	-0.655

file name: 308941CR500.dwg; layout name: CR500; created by: Queensland Tracery; file location: G:\308941\308941\LA\LA\Plot.dwg; date: 17/01/2022; L10; A1; Sheet: 10 of 16 Sheets

Rev	Description	By	Date
A	ISSUED FOR APPROVAL	M.H	20/12/21
	Amendments	Approved	Date



L6 414 LA TROBE STREET PO BOX 16084 MELBOURNE
VICTORIA 3007 AUSTRALIA T 61 3 9993 7888
spiire.com.au ABN 55 050 029 635

Designed
O.TRAORE

Checked

Authorised
M.HOLMES

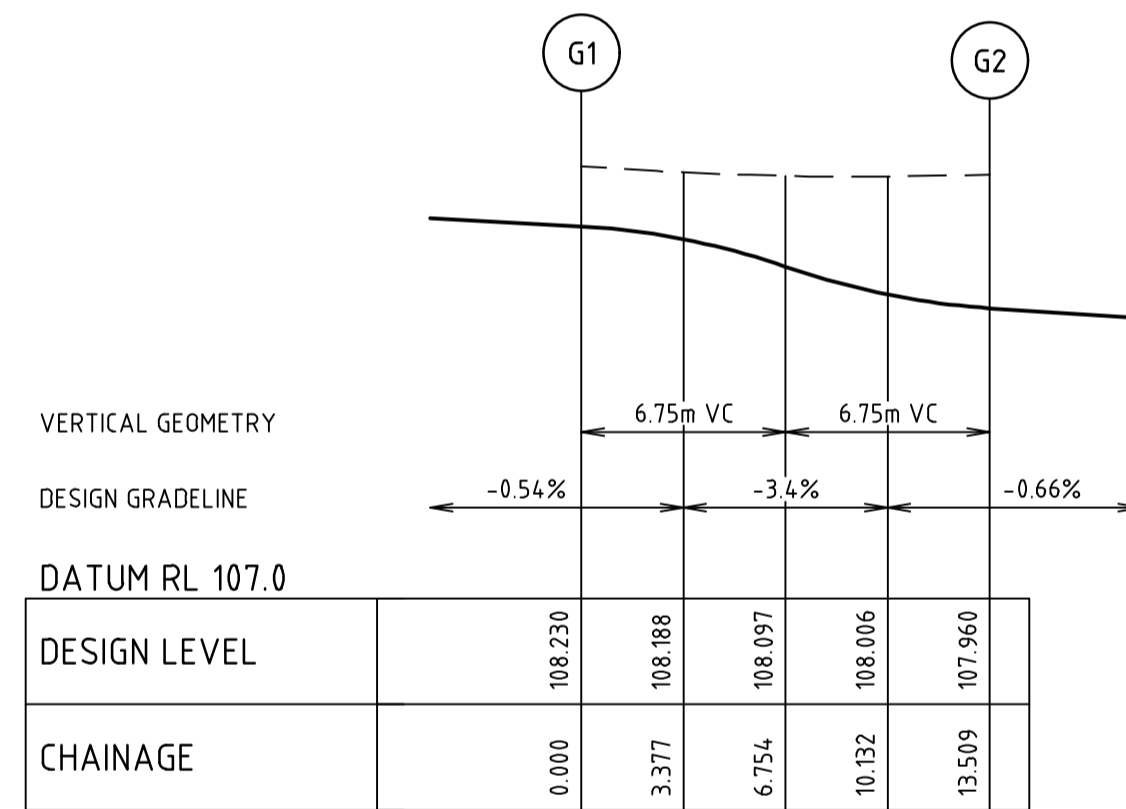
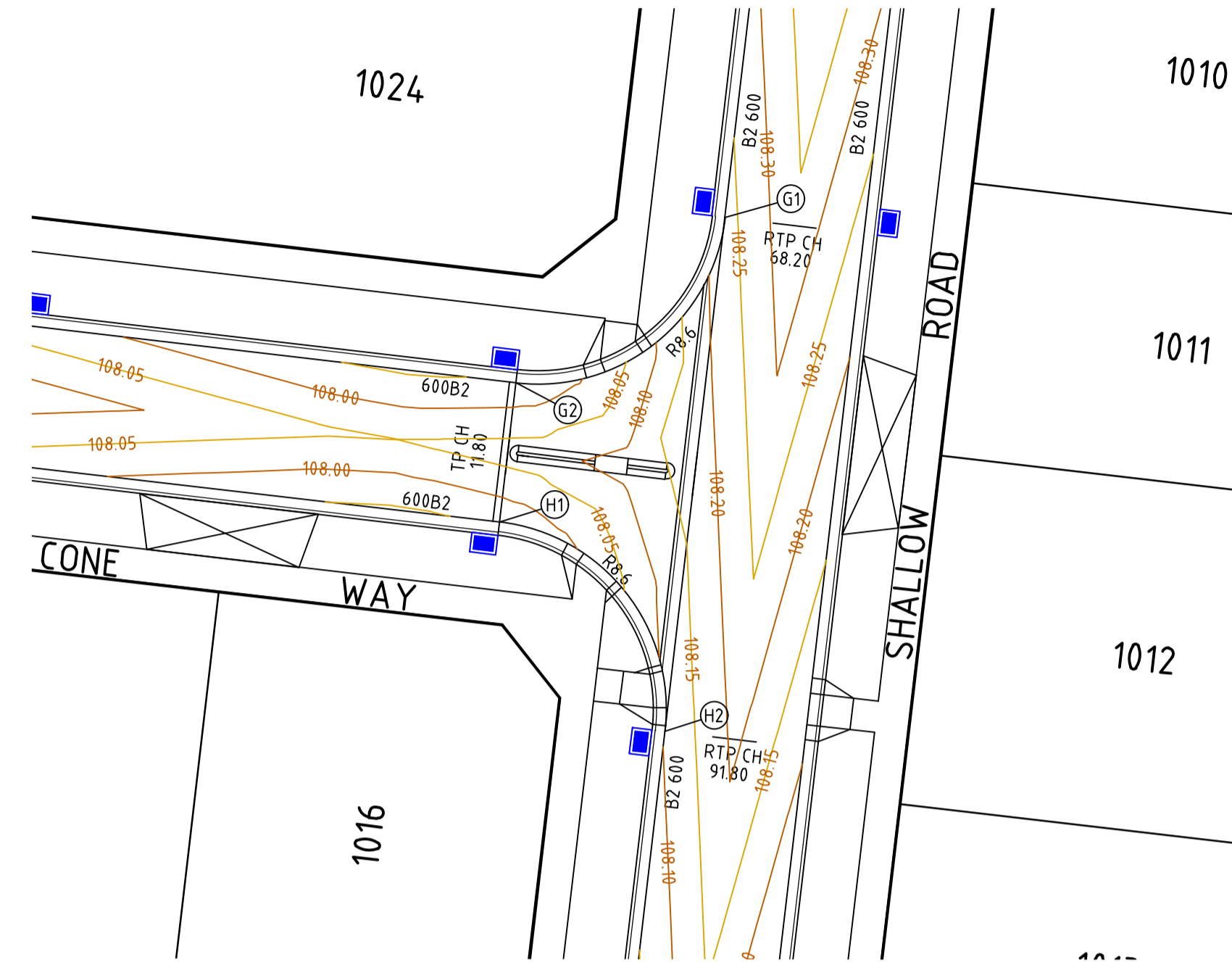
Date
DECEMBER 2021

**SEVENTH BEND
STAGE 10
ROAD AND DRAINAGE
INTERSECTION DETAILS - SHEET 1**
MELTON CITY COUNCIL
EXFORD ROAD MANAGEMENT PTY LTD

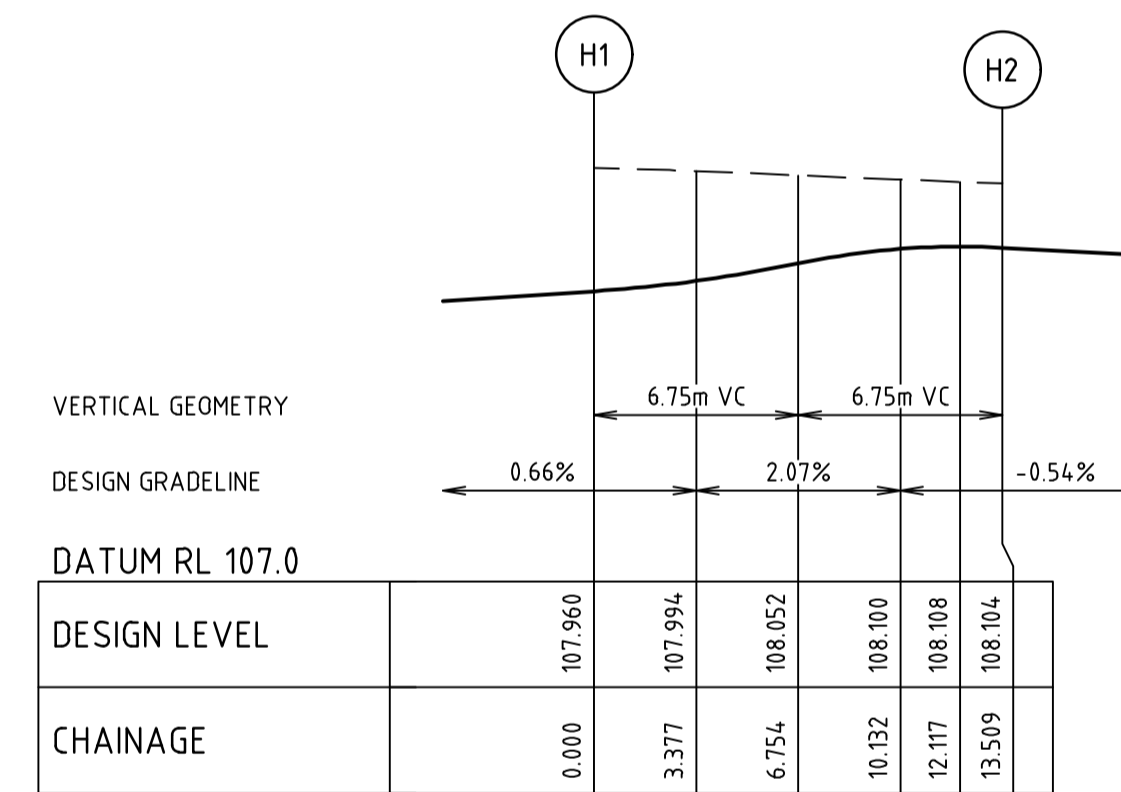
PRELIMINARY

Dwg No
308941CR500

Rev
A



ALIGNMENT G



ALIGNMENT H

ALIGNMENT G

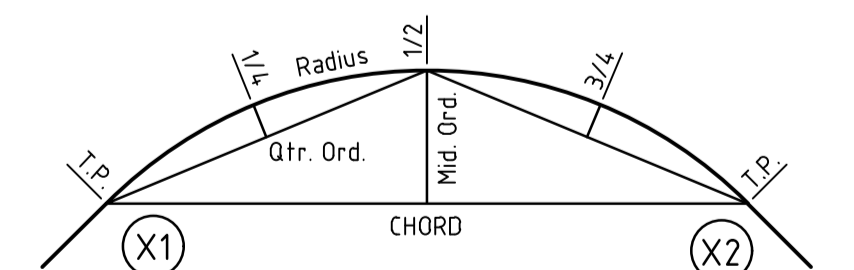
POINT NO	EASTING	NORTHING	RL
G1	286290.859	5822396.198	108.230
1/4	286289.828	5822393.005	108.188
1/2	286287.653	5822390.450	108.097
3/4	286284.666	5822388.921	108.006
G2	286281.321	5822388.652	107.960

CURVE	RADIUS	ARC L	CHORD	MID ORD	QTR ORD
G1-G2	8.600	13.509	12.162	2.519	0.655

ALIGNMENT H

POINT NO	EASTING	NORTHING	RL
H1	286280.579	5822382.295	107.960
1/4	286283.772	5822381.264	107.994
1/2	286286.328	5822379.089	108.052
3/4	286287.856	5822376.102	108.100
H2	286288.125	5822372.757	108.104

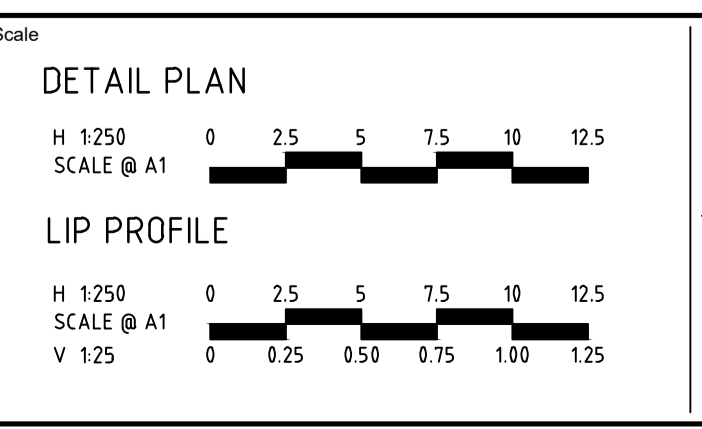
CURVE	RADIUS	ARC L	CHORD	MID ORD	QTR ORD
H1-H2	8.600	13.509	12.162	2.519	0.655



KERB RETURN SETOUT DETAIL

file name: 308941CR501.dwg, layout name: CR501, plotted by: Ousama Tazari, file location: G:\308941\308941\Drawings\A1\A1.dwg, plot date: 17/12/2021 10:48:18, Sheet: 11 of 16 Sheets

Rev	Amendments	Approved	Date
A	ISSUED FOR APPROVAL	M.H	20/12/21



System Certified

© Spiire Australia Pty Ltd All Rights Reserved
This document is produced by Spiire Australia Pty Ltd solely for the benefit of and use by the client in accordance with the terms of the retainer. Spiire Australia Pty Ltd does not and shall not assume any responsibility or liability whatsoever to any third party arising out of any use or reliance by third party on the content of this document.

L6 414 LA TROBE STREET PO BOX 16084 MELBOURNE
VICTORIA 3007 AUSTRALIA T 61 3 9993 7888
spiire.com.au ABN 55 050 029 635

Designed
O.TRAORE

Checked

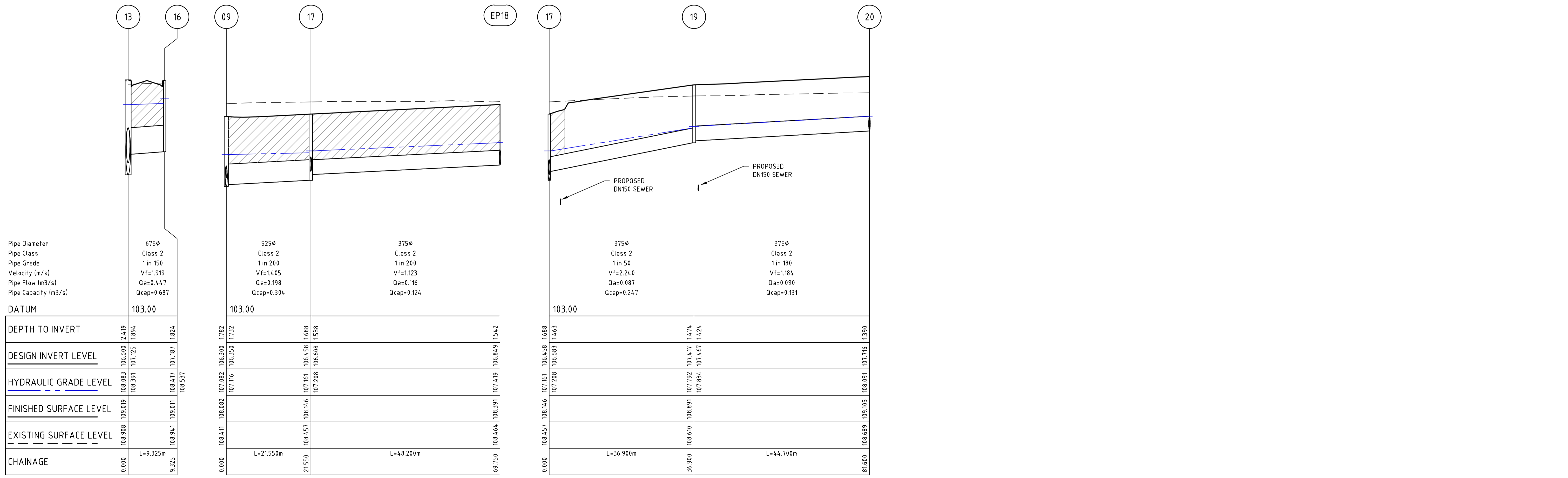
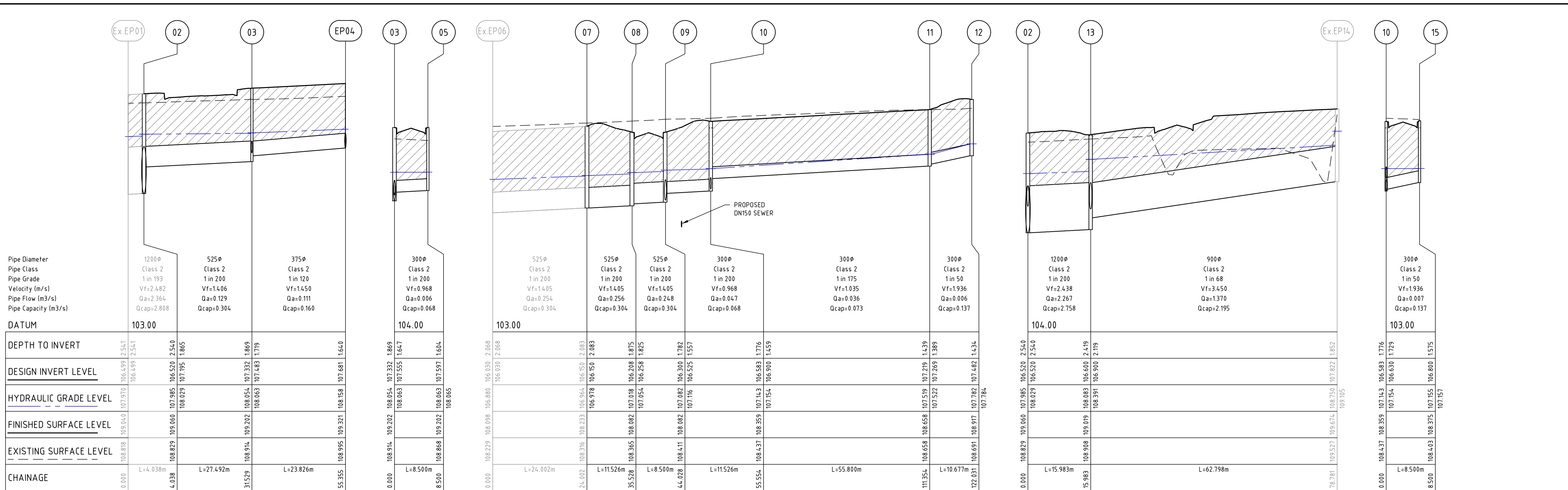
Authorised
M.HOLMES

Date
DECEMBER 2021

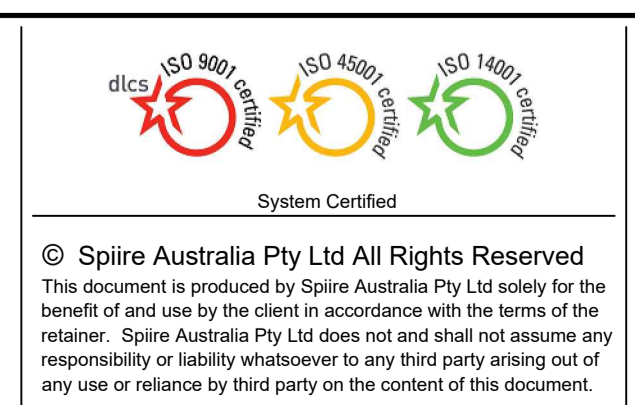
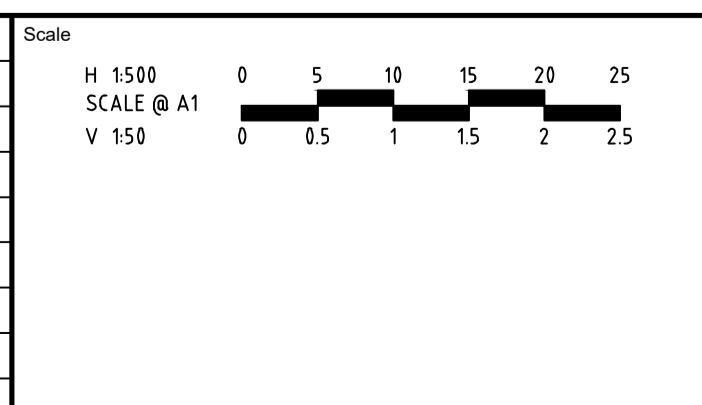
**SEVENTH BEND
STAGE 10
ROAD AND DRAINAGE
INTERSECTION DETAILS - SHEET 2**
MELTON CITY COUNCIL
EXFORD ROAD MANAGEMENT PTY LTD

PRELIMINARY Dwg No **308941CR501** Rev **A**

file name: 308941CR600.dwg layout name: CR600 sheeted by: Ousama Taseer
 file location: G:\308941\308941.dwg plot date: 17/07/2022 10:41 AM sheet 12 of 16 sheets



Rev	Description	Approved	Date
A	ISSUED FOR APPROVAL	M.H	20/12/21
Rev	Amendments	Approved	Date



spiire

L6 414 LA TROBE STREET PO BOX 16084 MELBOURNE
 VICTORIA 8007 AUSTRALIA T 61 3 9993 7888
 spiire.com.au ABN 55 050 029 635

SEVENTH BEND

Designed: O.TRAORE
 Authorised: M.HOLMES

Checked: []
 Date: DECEMBER 2021

**SEVENTH BEND
 STAGE 10
 ROAD AND DRAINAGE
 DRAINAGE LONG SECTIONS
 MELTON CITY COUNCIL
 EXFORD ROAD MANAGEMENT PTY LTD**

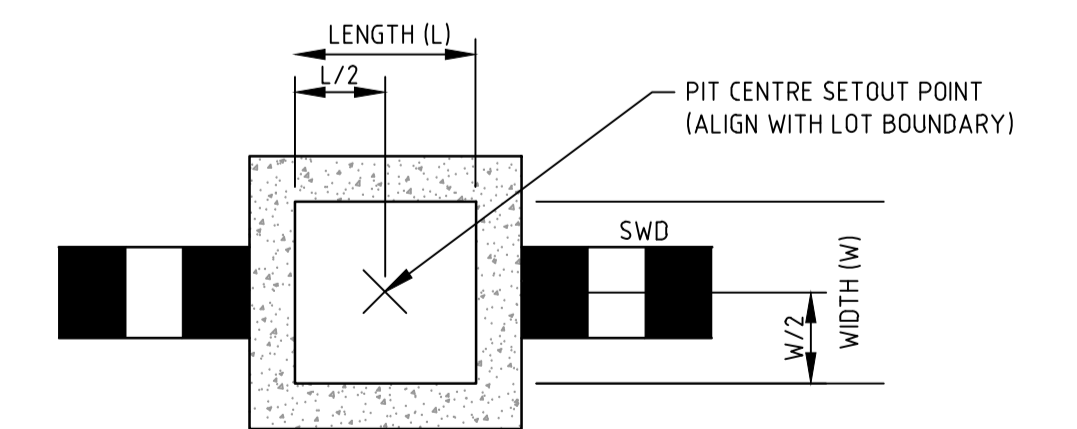
PRELIMINARY Drg No: 308941CR600 Rev: A

DRAINAGE PIT SCHEDULE

PIT		INTERNAL		INLET		OUTLET		PIT		REMARKS
NAME	TYPE	WIDTH	LENGTH	DIA	INV LEVEL	DIA	INV LEVEL	FS LEVEL	DEPTH	
PIT		INTERNAL		INLET		OUTLET		PIT		REMARKS
NAME	TYPE	WD	LEN	DIA	INV LEV	DIA	INV LEV	SETOUT RL	DEPTH	
02	JUNCTION PIT	2400	900	525	107.195	1200	106.520	109.060	2.540	REFER TO EDCM 607. PIT TO BE HAUNCHED UNDER THE ROAD
				1200	106.520					
03	GRADED SIDE ENTRY PIT	900	600	375	107.483	525	107.332	109.202	1.869	REFER TO EDCM 601.
				300	107.555					
04	ENDPIPE	0	0			375	107.681	109.321	1.640	END PIPE AND DN 375 PLUG
				375	107.681					
05	JUNCTION PIT	900	600			300	107.597	109.202	1.604	REFER TO EDCM 605
06	OUTFALL	0	0	525	106.030			108.098	2.068	REMOVE PLUG AND CONNECT TO EXISTING END PIPE
07	JUNCTION PIT	750	900	525	106.150	525	106.150	108.233	2.083	REFER TO EDCM 605
08	GRADED SIDE ENTRY PIT	750	900	525	106.258	525	106.208	108.082	1.875	REFER TO EDCM 601.
09	GRADED SIDE ENTRY PIT	900	750	300	106.525	525	106.300	108.082	1.782	REFER TO EDCM 601.
				525	106.350					
10	GRADED SIDE ENTRY PIT	600	900	300	106.900	300	106.583	108.359	1.776	REFER TO EDCM 601.
				300	106.630					
11	JUNCTION PIT	600	900	300	107.269	300	107.219	108.658	1.439	REFER TO EDCM 605
12	GRADED SIDE ENTRY PIT	600	900			300	107.482	108.917	1.434	REFER TO EDCM 601.
13	DOUBLE SIDE ENTRY PIT	1500	900	900	106.900	1200	106.600	109.019	2.419	REFER TO EDCM 602
				675	107.125					
14	ENDPIPE	0	0			900	107.822	109.674	1.852	REMOVE EXISTING HEADWALL AND CONNECT TO EXISTING PIPE
15	GRADED SIDE ENTRY PIT	600	900			300	106.800	108.375	1.575	REFER TO EDCM 601.
16	DOUBLE SIDE ENTRY PIT	900	600			675	107.187	109.011	1.824	REFER TO EDCM 602
17	JUNCTION PIT	600	900	375	106.608	525	106.458	108.146	1.688	REFER TO EDCM 605
				375	106.683					
18	ENDPIPE	0	0			375	106.849	108.391	1.542	END PIPE AND DN 375 PLUG
				375	106.849					
19	JUNCTION PIT	600	900	375	107.467	375	107.417	108.891	1.474	REFER TO EDCM 605
20	ENDPIPE	0	0			375	107.716	109.105	1.390	END PIPE AND DN 375 PLUG
				375	107.716					

PIT SETOUT CO-ORDINATES

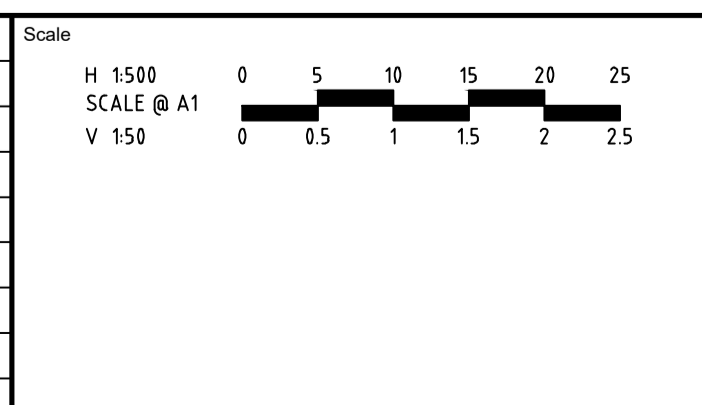
PIT	COORDINATES	
	EASTING	NORTHING
NAME	EASTING	NORTHING
PIT	EASTING	NORTHING
NAME		
02	286261.376	58224.72.456
03	286234.083	58224.75.761
04	286210.418	58224.78.522
05	286233.099	58224.67.319
06	286284.359	582234.8.428
07	286287.013	582237.2.283
08	286279.862	5822381.322
09	286280.847	5822389.765
10	286289.886	5822396.916
11	286296.350	58224.52.34.0
12	286289.726	58224.60.714
13	286252.838	58224.83.803
14	286210.358	5822510.268
15	286298.329	5822395.931
16	286243.585	58224.84.958
17	286259.442	5822392.261
18	286211.566	5822397.845
19	286263.717	58224.28.913
20	286219.318	58224.34.092



TYPICAL DRAINAGE PIT SETOUT POINT 'C'
JUNCTION PIT/ EASEMENT PIT
NOT TO SCALE

file name: 308941CR601.dwg, layout name: CR601, plotted by: Ousama Taseer, file location: G:\308941\308941.dwg, plot date: 17/12/2021 10:41:48, Sheet 13 of 16 Sheets

Rev	Amendments	Approved	Date
A	ISSUED FOR APPROVAL	M.H	20/12/21



System Certified

 © Spiire Australia Pty Ltd All Rights Reserved

This document is produced by Spiire Australia Pty Ltd solely for the benefit of and use by the client in accordance with the terms of the retainer. Spiire Australia Pty Ltd does not and shall not assume any responsibility or liability whatsoever to any third party arising out of any use or reliance by third party on the content of this document.

L6 414 LA TROBE STREET PO BOX 16084 MELBOURNE
 VICTORIA 8007 AUSTRALIA T 61 3 9993 7888
 spiire.com.au ABN 55 050 029 635

Designed: O.TRAORE
 Authorised: M.HOLMES
 Checked: []
 Date: DECEMBER 2021

SEVENTH BEND
STAGE 10
 ROAD AND DRAINAGE
 PIT SCHEDULE & SETOUT TABLES
 MELTON CITY COUNCIL
 EXFORD ROAD MANAGEMENT PTY LTD
PRELIMINARY

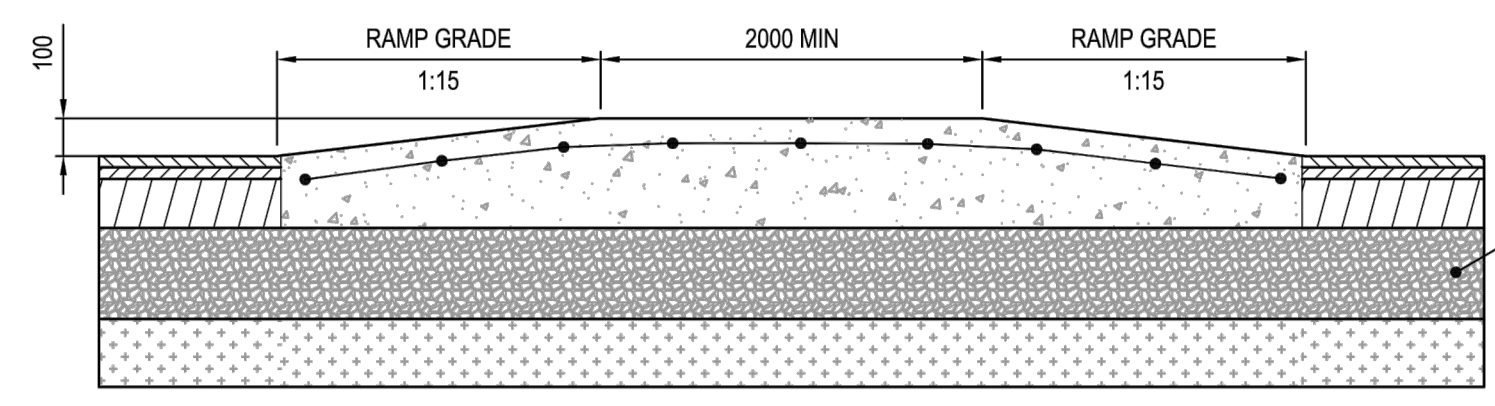
 Drg No: 308941CR601
 Rev: A

DESIGN PAVEMENT PROFILE

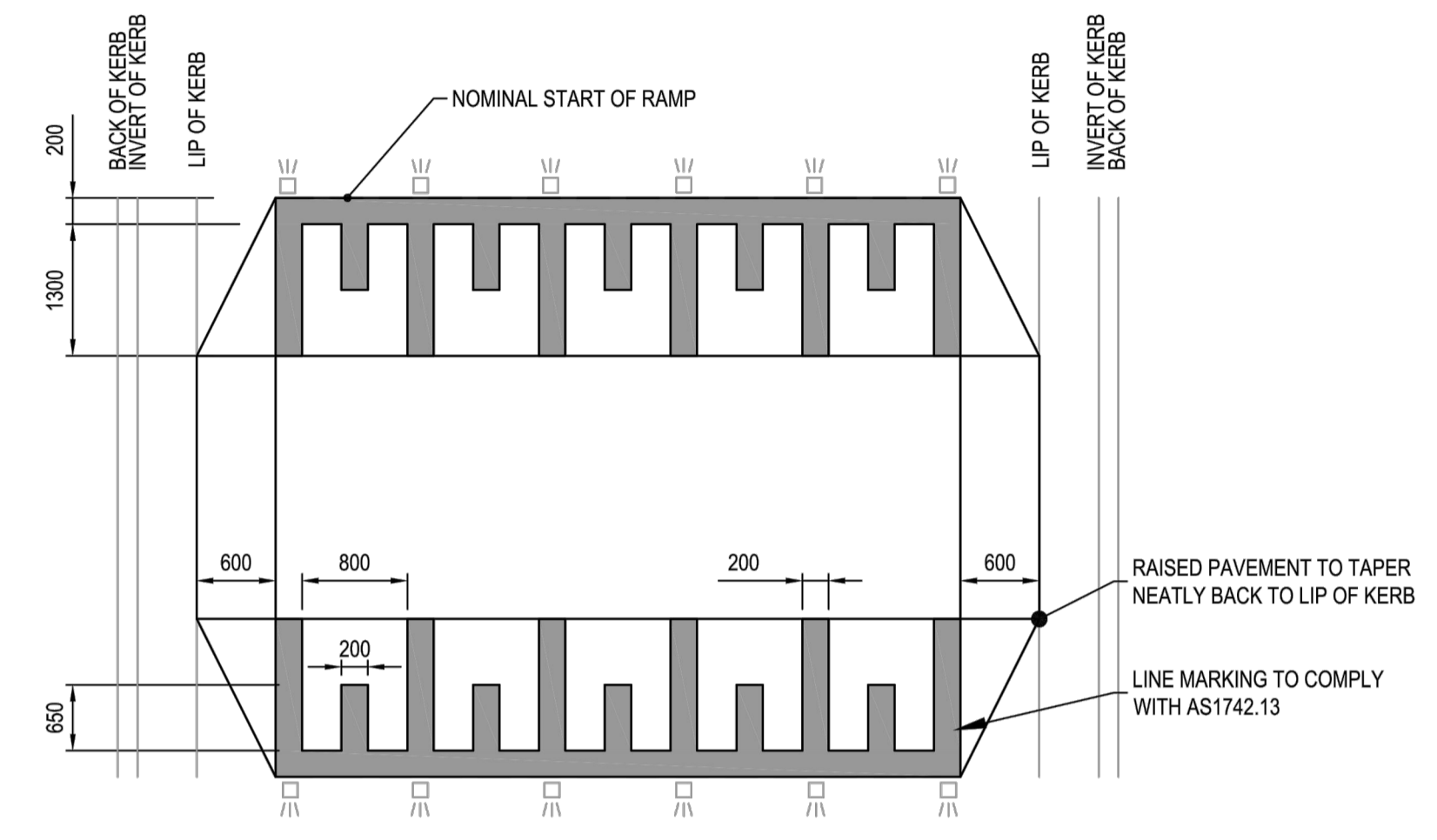
PAVEMENT LAYER	DESCRIPTION	DEPTH (mm)
WEARING COURSE ASPHALT	SIZE 10 TYPE N ASPHALT (CLASS 320 BINDER)	30
BASE COURSE ASPHALT	SIZE 10 TYPE N ASPHALT (CLASS 320 BINDER)	30
SAMI	SIZE 10 SAMI S18R	10
PRIME OR PRIMESEAL	Y	Y
BASE	CLASS 2 FINE CRUSHED ROCK (SIZE 20mm) COMPACTED TO A DENSITY OF 100% (MODIFIED) AS1289.5.2.1	130
	UPPER PAVEMENT TOTAL	200
SUBBASE	CLASS 3 FINE CRUSHED ROCK (SIZE 20mm) COMPACTED TO A DENSITY OF 98% (MODIFIED) AS1289.5.2.1	190
CAPPING LAYER	TYPE A CAPPING LAYER, SELECT GRANULAR MATERIAL WITH A MINIMUM SOAKED CBR OF 10% COMPACTED TO AT LEAST 98% CHARACTERISTIC MODIFIED COMPACTION AS PER EDM STANDARD.	150
CONSTRUCTION LAYER	VICROADS TYPE A CONSTRUCTION LAYER CONSTRUCTED TO THE SAME SPECIFICATIONS AS THE CAPPING LAYER	150
	TOTAL PAVEMENT DEPTH	690

* REFER PAVEMENT PLAN FOR LOCATION OF PAVEMENT TYPES

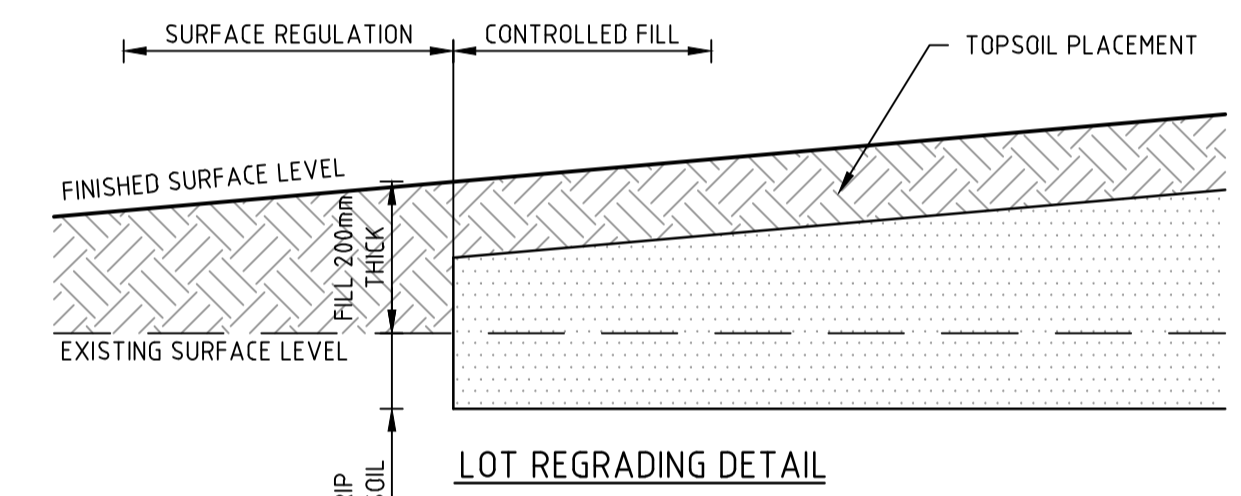
ROAD NAME	TYPE
STOCKWELL STREET	A
SHELTERBELT AVENUE	A
CONE WAY	A
SHALLOW ROAD	A



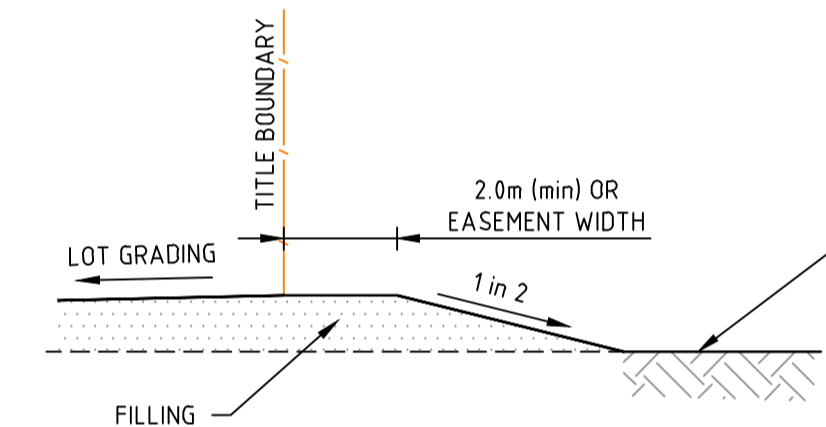
FLAT TOP RAISED PAVEMENT INTERSECTION TREATMENT
NOT TO SCALE



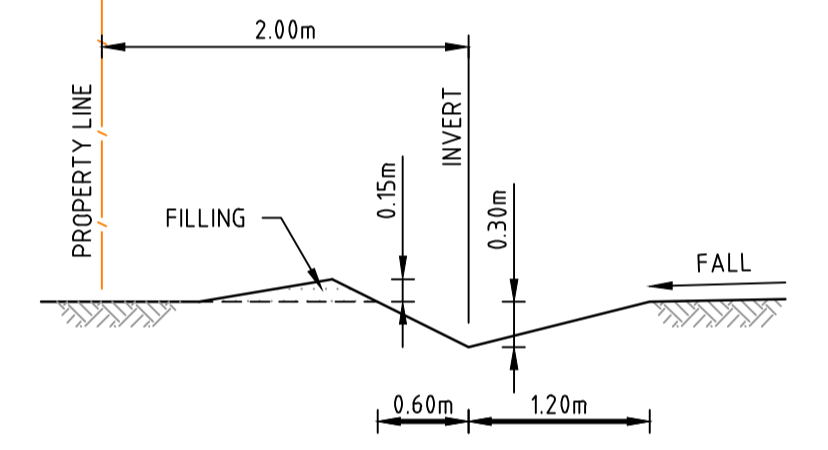
LINE MARKING FOR RAISED PAVEMENTS
NOT TO SCALE



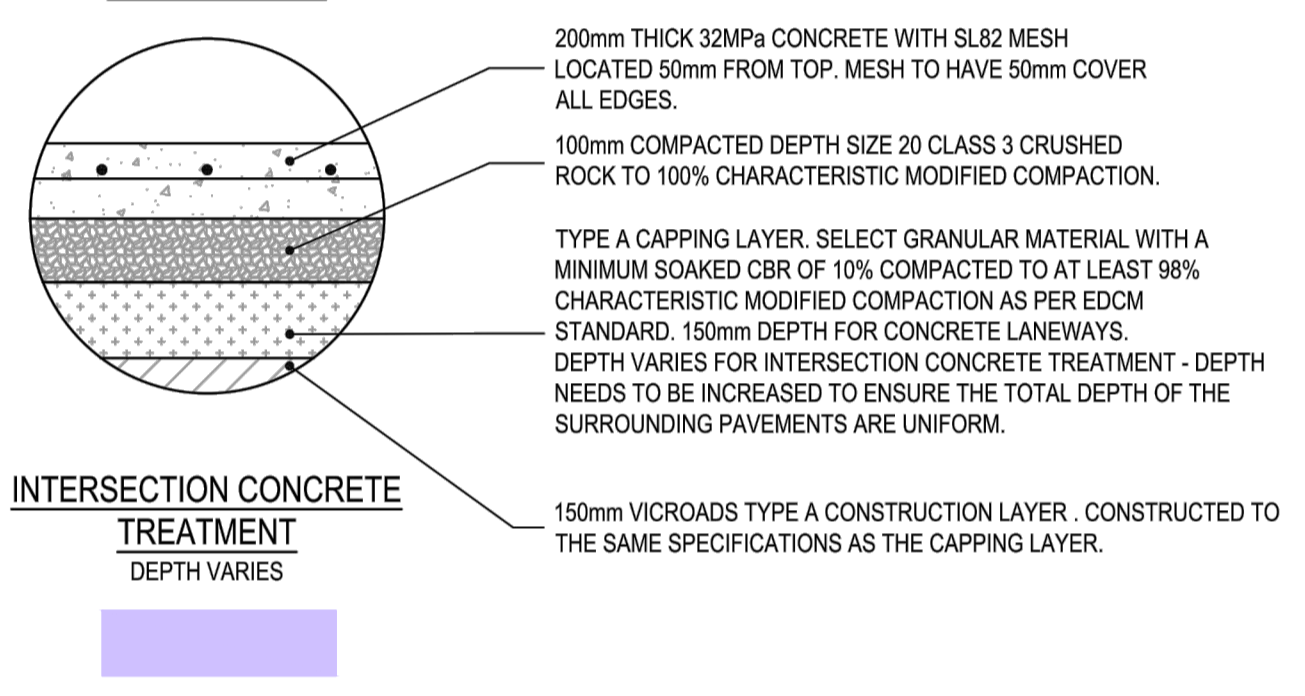
LOT REGRADING DETAIL



LOT FILLING AT STAGE BOUNDARY



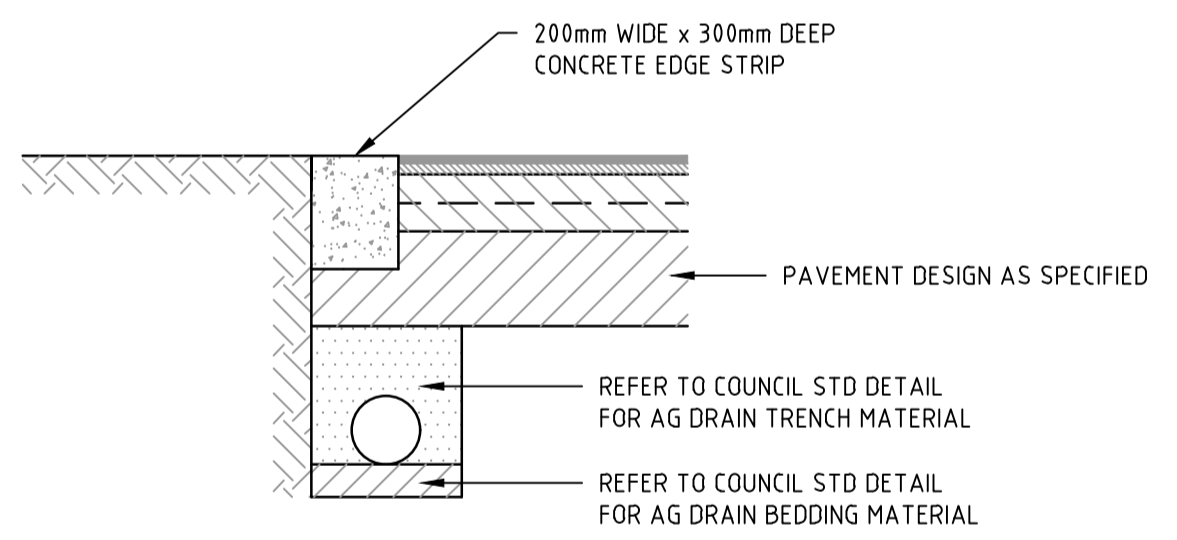
TYPICAL CATCH DRAIN SECTION



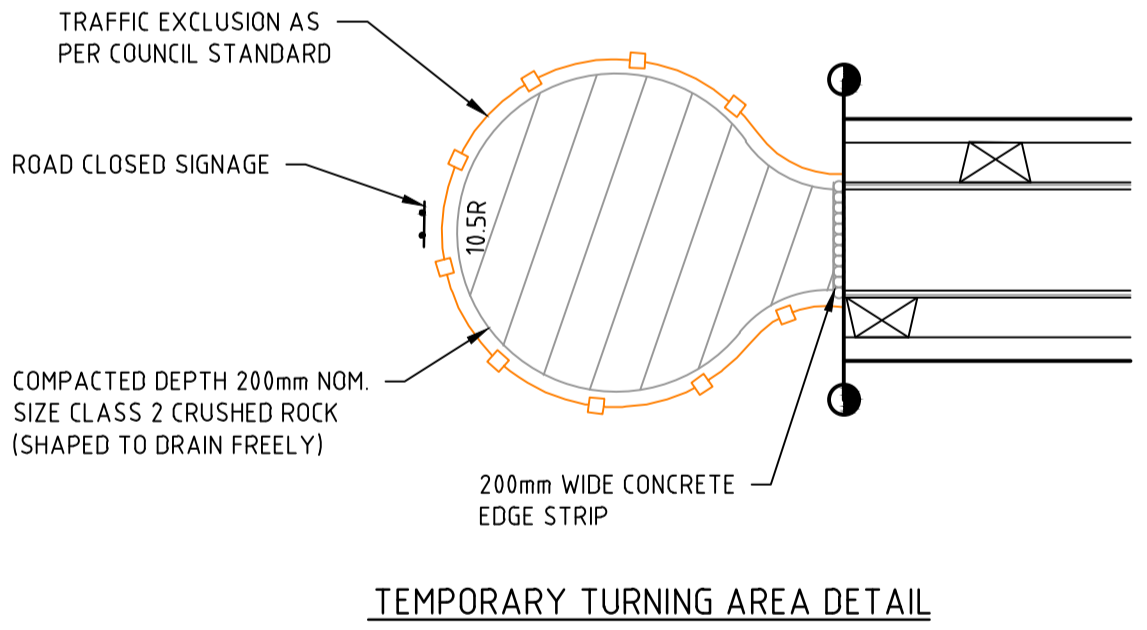
INTERSECTION CONCRETE TREATMENT
DEPTH VARIES

GENERAL NOTES:

- ALL WORKS TO BE COMPLETED IN ACCORDANCE WITH RELEVANT AUSTRALIAN STANDARDS AND CCAA LITERATURE, OR VIC ROADS STANDARDS FOR NON RESIDENTIAL STREETS.
- ALL CONCRETE TO BE MINIMUM 32MPa COMPRESSIVE STRENGTH
- CONCRETE TO BE THOROUGHLY COMPACTED USING EITHER SURFACE AND/OR IMMERSSION VIBRATORS, PARTICULARLY AROUND REINFORCEMENT AND IN CORNERS OF FORMS.
- PRIOR TO CASTING, THE UNBOUND GRANULAR SUBBASE MUST BE DAMP TO ENSURE NO EARLY "DRYING OUT" OF THE CONCRETE.
- CURING OF CONCRETE IS ESSENTIAL - IDEALLY BY MAINTAINING WET HESSIAN OR SEALING WITH PLASTIC SHEETING.
- SAW CUTTING OF CONCRETE SHOULD BE COMMENCED AS SOON AS CONCRETE PERMITS BY EXPERIENCED CONTRACTORS, BUT NO LATER THAN 12 HOURS AFTER POUR.
- ALL DOWELS TO BE GRADE 250R STEEL BARS, 450mm LONG AND PLACED AT 300mm CENTRES. REFER CCAA- "CONCRETE PAVEMENT DESIGN FOR RESIDENTIAL STREETS" FOR DOWEL DIAMETERS. DOWELS MUST BE ACCURATELY PLACED TO ENSURE THE JOINT DOES NOT "LOCK". INSERTION OF DOWELS DURING THE PLACING OF CONCRETE IS NOT ACCEPTABLE. DOWELS MUST BE SAWN AND NOT CROPPED.
- ALL JOINTS TO BE APPROPRIATELY SEALED TO RESIST THE INTRUSION OF SAND AND GRAVEL AND TO MINIMISE THE INGRESS OF WATER.

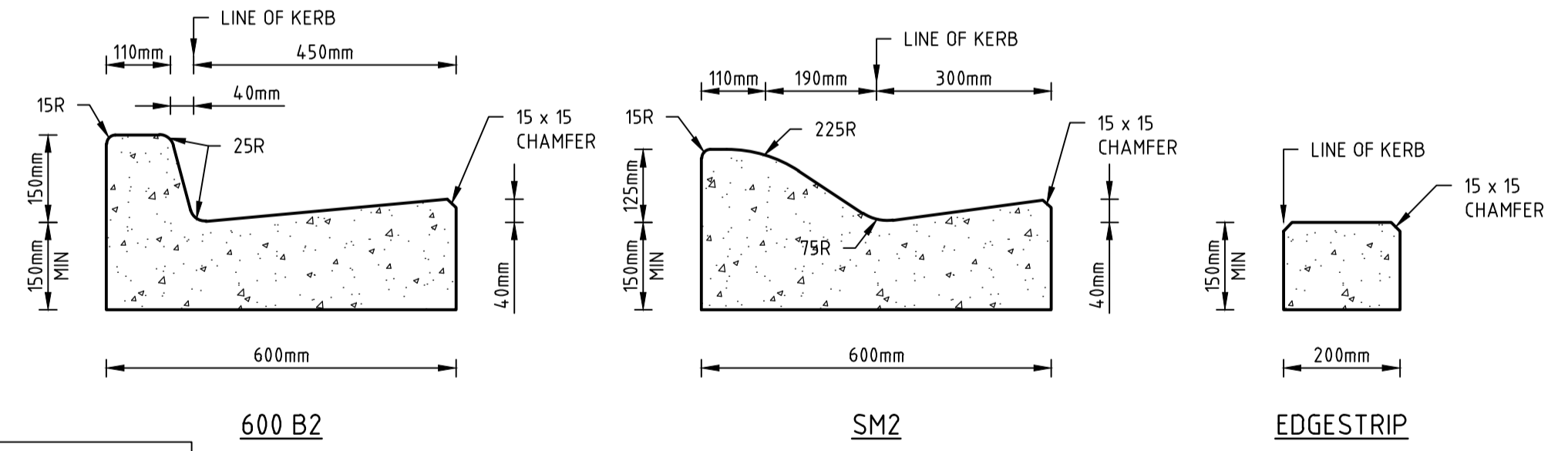


LIMIT OF WORKS CONCRETE EDGE STRIP & PAVEMENT INTERFACE DETAIL



TEMPORARY TURNING AREA DETAIL

NOT TO SCALE

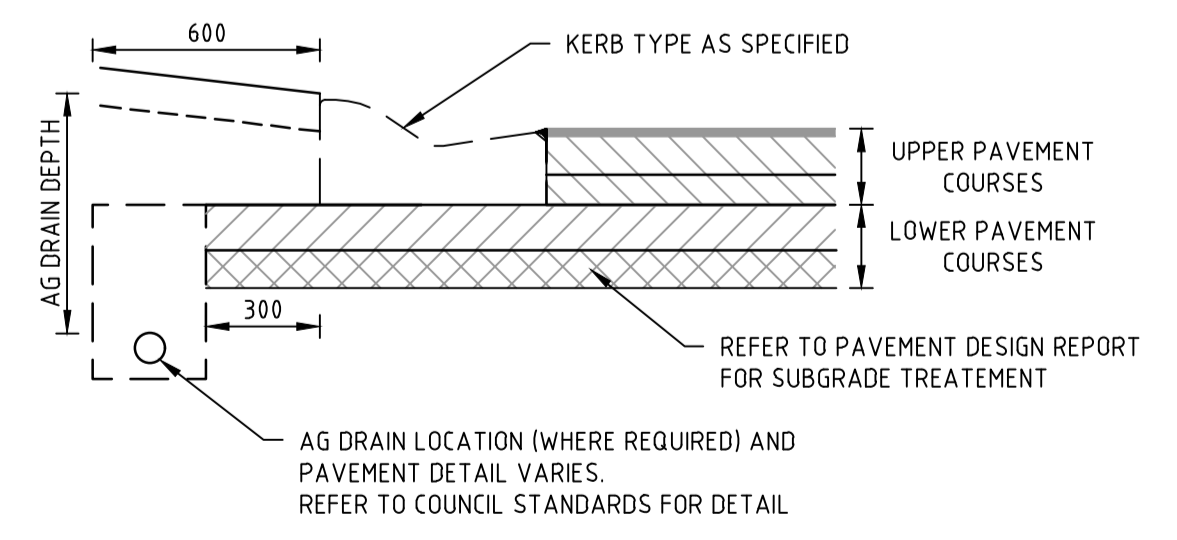


STANDARD KERB PROFILES

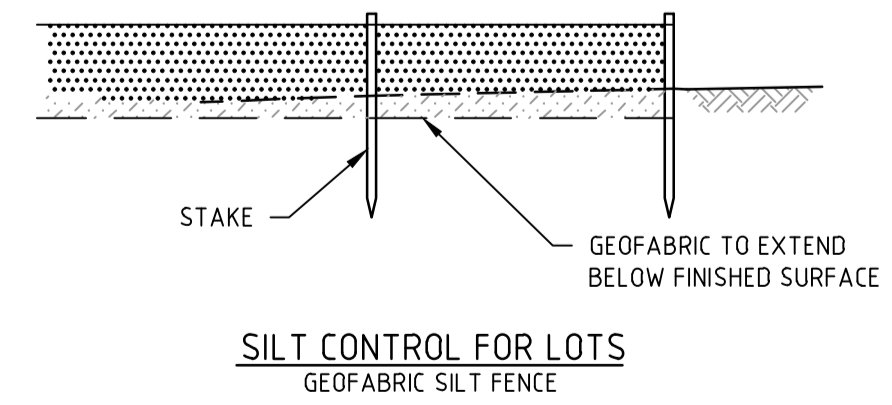
NOTES:

- ALL KERB & CHANNEL AS PER GAA STD DRAWING EDM 301 & 302.
- ALL KERBS AND KERB & CHANNEL TO BE REINFORCED IN ACCORDANCE WITH MUNICIPALITY STD DRAWINGS.
- ALL KERBS AND KERB & CHANNEL TO HAVE 200mm DEPTH OF CONCRETE BELOW TOP OF PAVEMENT LEVEL.

H 1:100 SCALE @ A1



TYPICAL SUBSURFACE DRAIN DETAIL FOR NON-EXPANSIVE SUBGRADE
REFER TO AUTHORITY REQUIREMENTS FOR SPECIFIC DETAILS



SILT CONTROL FOR LOTS
GEOFABRIC SILT FENCE

PAVEMENT DETAILS

THE PAVEMENT DESIGNS SHOWN HERE HAVE BEEN DESIGNED/PROVIDED BY GROUND SCIENCE WHO ARE RESPONSIBLE FOR THE GEOTECHNICAL WORK ON THIS PROJECT. SPIIRE IS NOT RESPONSIBLE FOR THE WORK OF GROUND SCIENCE.

THE DESIGN HAS BEEN EXTRACTED FROM THE SEVENTH BEND ESTATE (PRECINCTS 2 & 3) SOUTH MELTON 10 SEPT 2020 REF G3696.1 AB REPORT ON "GEOTECHNICAL INVESTIGATION FOR SEVENTH BEND ESTATE" THIS DOCUMENT SHOULD BE REVIEWED TO ENSURE THAT THE DESIGN HAS BEEN ACCURATELY REPRODUCED.

A COPY OF THE DOCUMENT WILL BE PROVIDED ON REQUEST.

SPIIRE DOES NOT ACCEPT ANY RESPONSIBILITY FOR THE ACCURACY, ADEQUACY OR APPROPRIATENESS OF THE GEOTECHNICAL WORK AND PAVEMENT DESIGNS.

ANY QUERIES IN RESPECT TO THE GEOTECHNICAL WORK AND PAVEMENT DESIGNS SHOULD BE ADDRESSED TO GROUND SCIENCE AND COPIED TO SPIIRE.



© Spiire Australia Pty Ltd All Rights Reserved
This document is produced by Spiire Australia Pty Ltd solely for the benefit of and use by the client in accordance with the terms of the retainer. Spiire Australia Pty Ltd does not and shall not assume any responsibility or liability whatsoever to any third party arising out of any use or reliance by third party on the content of this document.



L6 414 LA TROBE STREET PO BOX 16084 MELBOURNE VICTORIA 8007 AUSTRALIA T 61 3 9993 7888
spiire.com.au ABN 55 050 029 635



Designed
O.TRAORE
Authorised
M.HOLMES

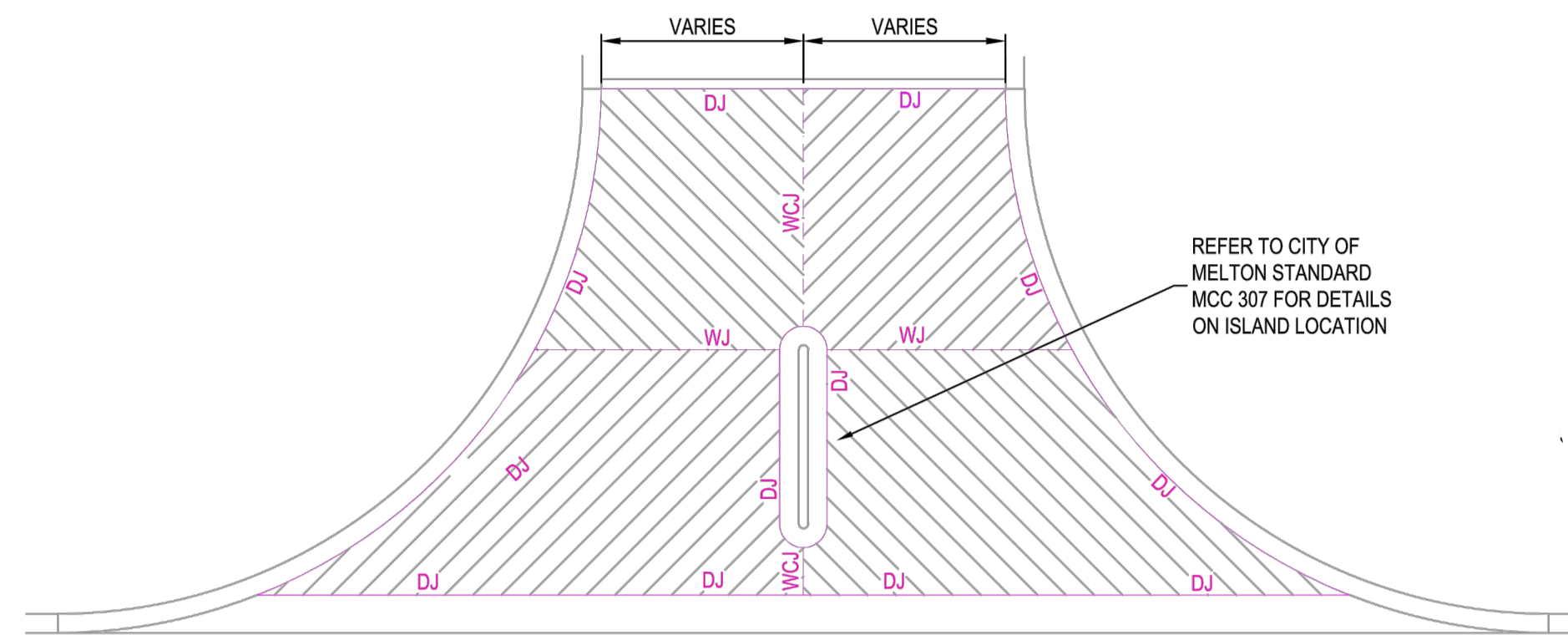
Checked
Date
DECEMBER 2021

SEVENTH BEND STAGE 10 ROAD AND DRAINAGE PAVEMENT AND TYPICAL DETAILS - SHEET 1
MELTON CITY COUNCIL
EXFORD ROAD MANAGEMENT PTY LTD

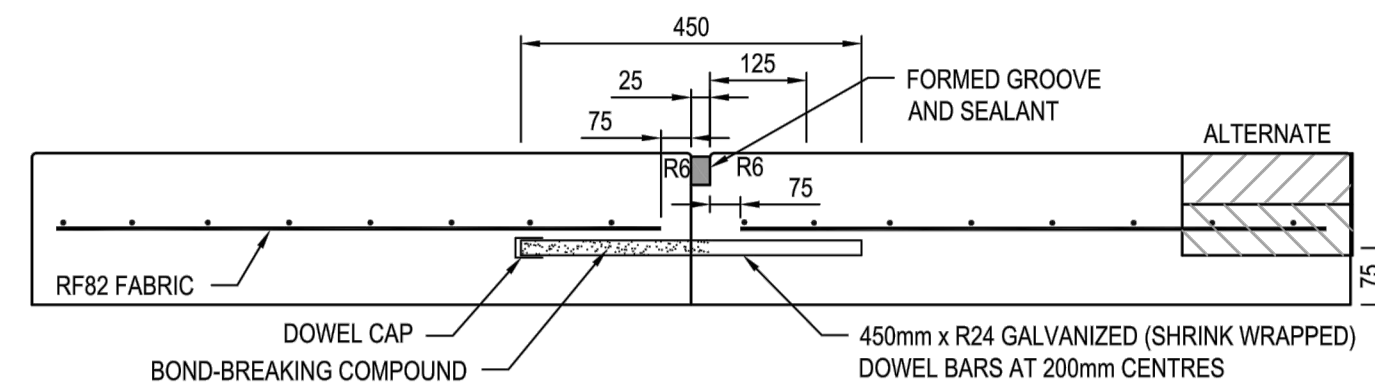
PRELIMINARY Drg No **308941CR700** Rev **A**

file name: 308941CR700.dwg, layout: crm, cprt: 0, created by: Ousman, Trefar, file location: G:\308941\308941.dwg, plot date: 17/01/2022, 14:41:48, Sheet: 14 of 16 Sheets

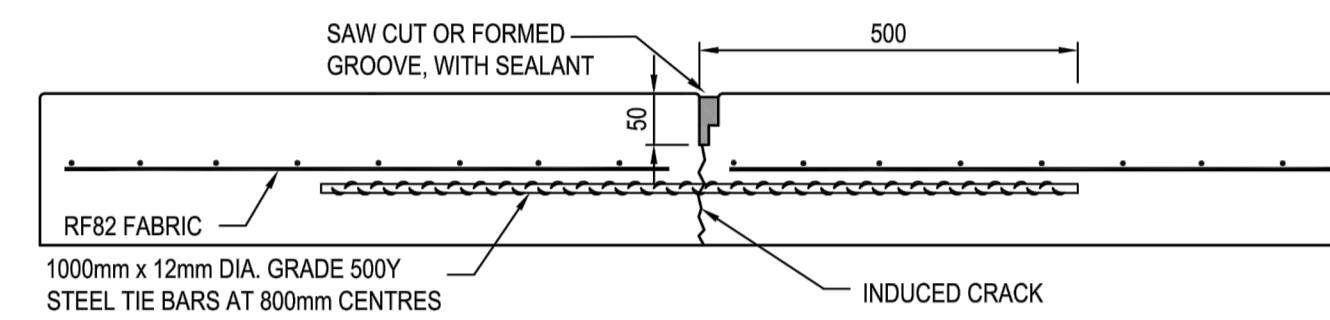
Rev	Issued For Approval	M.H	20/12/21
A	ISSUED FOR APPROVAL	M.H	20/12/21
	Amendments	Approved	Date



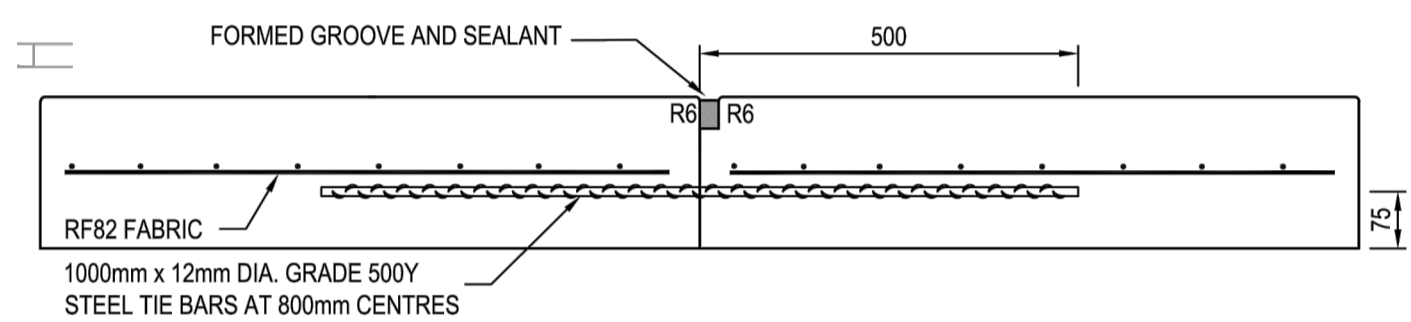
TYPICAL CONCRETE TREATMENT PAVEMENT DETAIL SCALE 1:100



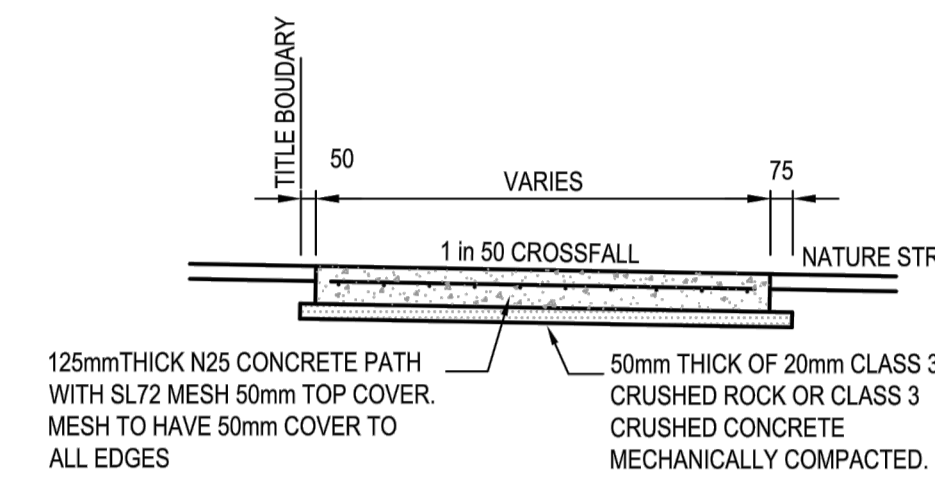
TRANSVERSE CONTRACTION JOINT DOWELLED BUTT JOINT AT CONSTRUCTION JOINT (DJ)



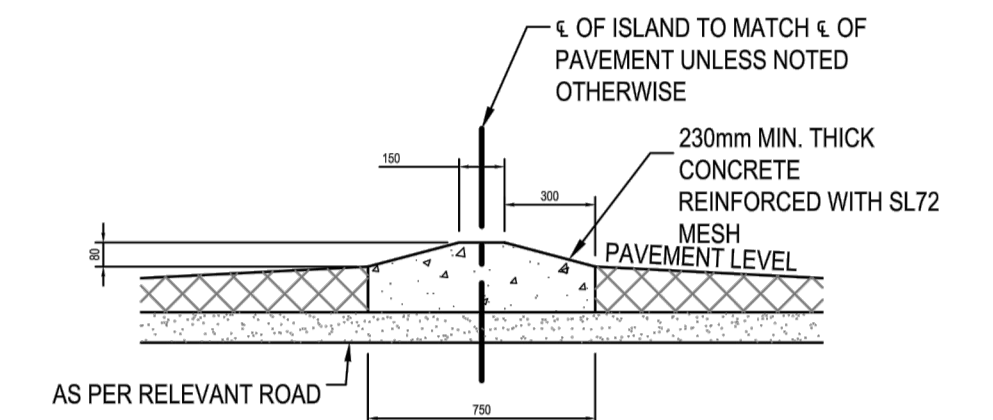
LONGITUDINAL WARPING JOINT WEAKENED PLANE JOINT (WJ)



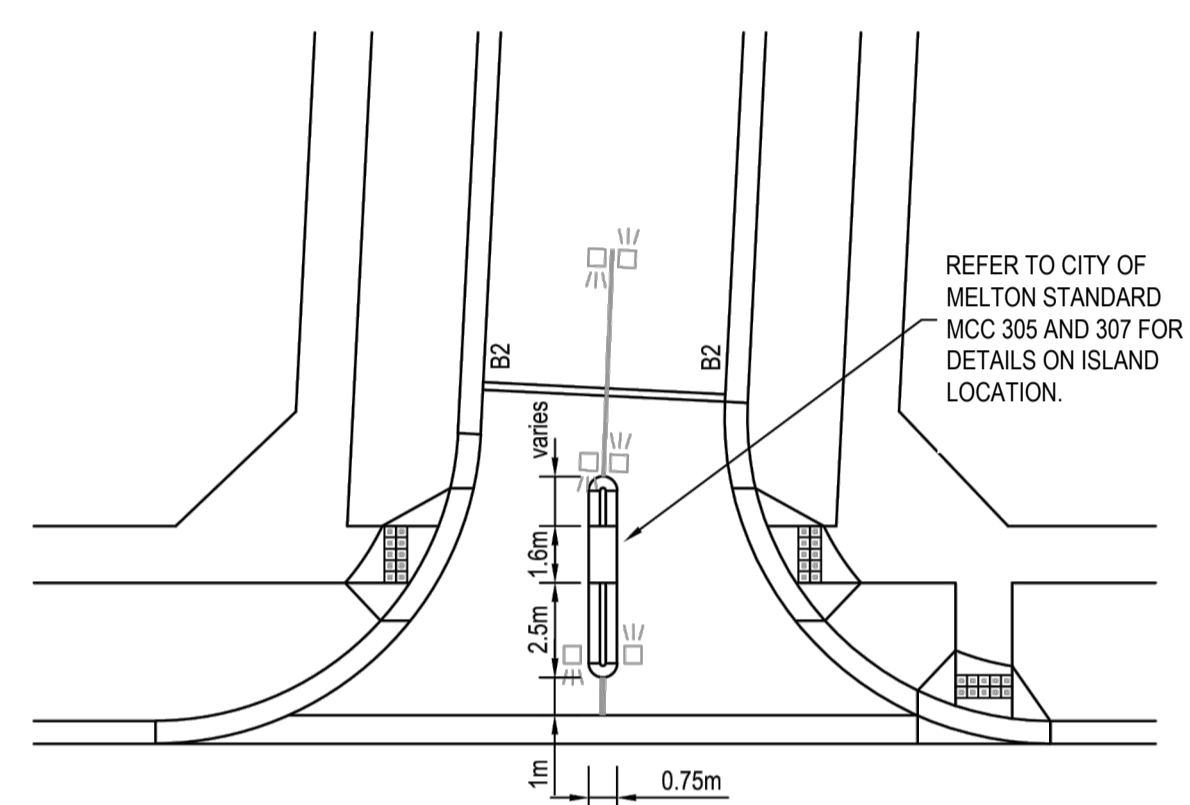
LONGITUDINAL WARPING JOINT CONSTRUCTION JOINT (WCJ)



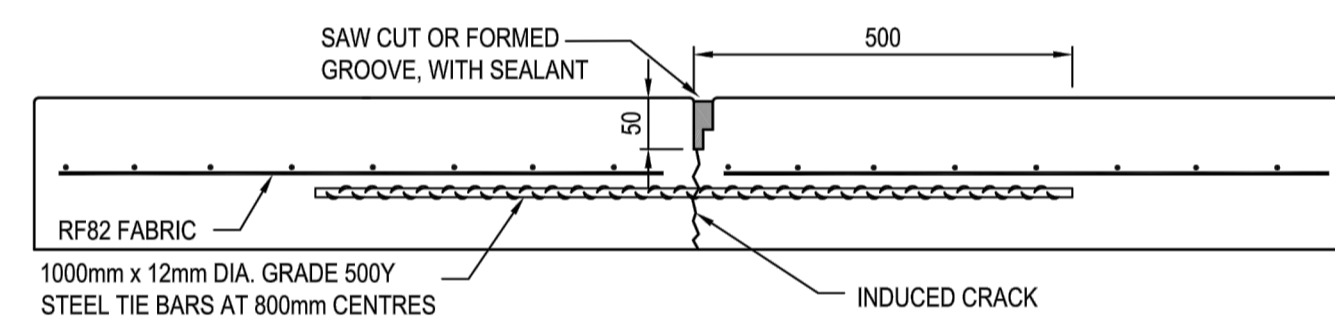
TYPICAL FOOTPATH CROSS SECTION NOT TO SCALE



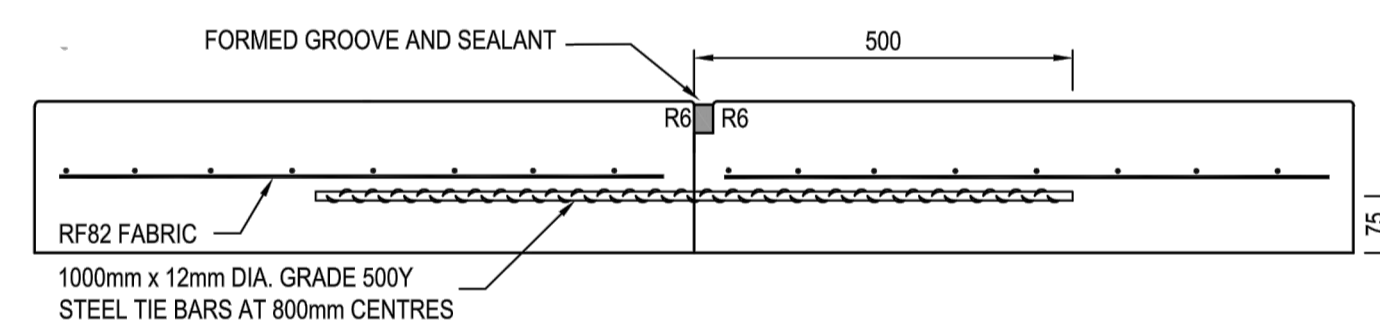
SI3 ISLAND - TYPICAL CROSS SECTION NOT TO SCALE (REFER TO CITY OF MELTON STD DWG MCC307)



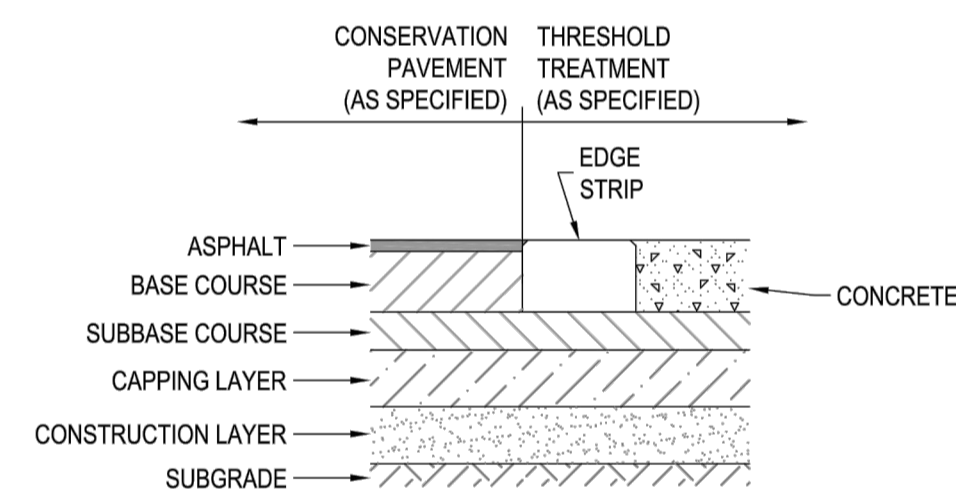
SI3 ISLAND - TYPICAL LAYOUT NOT TO SCALE



LONGITUDINAL WARPING JOINT WEAKENED PLANE JOINT (WJ)



LONGITUDINAL WARPING JOINT CONSTRUCTION JOINT (WCJ)



JOINT DETAIL FOR ROAD PAVEMENT & INTERSECTION THRESHOLD TREATMENT NOT TO SCALE

- JOINT DETAIL NOTES:
1. SAW JOINTS ARE TO BE PLACED AT A MAXIMUM 5m SPACING AT INTERSECTIONS AND CONSTRUCTED 18-24 HOURS AFTER POURING.
 2. TRANSVERSE/CONTRACTION JOINTS ARE TO BE PLACED AT A MAXIMUM SPACING OF 12m.
 3. ISOLATION JOINTS ARE TO BE PLACED AROUND PITS.
 4. ALL JOINTS SHALL BE LOCATED AND SPACED IN ACCORDANCE WITH "CEMENT AND CONCRETE ASSOCIATION OF AUSTRALIA - CONCRETE PAVEMENT DESIGN FOR RESIDENTIAL STREETS 1997".

file name: 308941CR701.dwg, layout name: CD701, plotted by: Ousmane Traore, file location: G:\308941\308941\CD701.dwg, plot date: 17/12/2021 10:41:48, sheet 15 of 16 sheets

Rev	Description	Approved	Date
A	ISSUED FOR APPROVAL	M.H	20/12/21
	Amendments		

Scale	

System Certified

 © Spiire Australia Pty Ltd All Rights Reserved

This document is produced by Spiire Australia Pty Ltd solely for the benefit of and use by the client in accordance with the terms of the retainer. Spiire Australia Pty Ltd does not and shall not assume any responsibility or liability whatsoever to any third party arising out of any use or reliance by third party on the content of this document.

L6 414 LA TROBE STREET PO BOX 16084 MELBOURNE VICTORIA 3007 AUSTRALIA T 61 3 9993 7888

 spiire.com.au ABN 55 050 029 635

Designed: O.TRAORE

 Authorised: M.HOLMES

 Checked:

 Date: DECEMBER 2021

SEVENTH BEND

STAGE 10

 ROAD AND DRAINAGE

 PAVEMENT AND TYPICAL DETAILS - SHEET 2

 MELTON CITY COUNCIL

 EXFORD ROAD MANAGEMENT PTY LTD

PRELIMINARY

 Drg No: 308941CR701

 Rev: A



SIGNAGE SCHEDULE

REFERENCE NO.	SIGN	COMMENTS
S1		STREET NAME PLATES TO BE IN ACCORDANCE WITH MELTON CITY COUNCIL STANDARDS
S2		G9-20
S3		D4-5
S4		W5-10
S5		W8-2
S6		W3-4

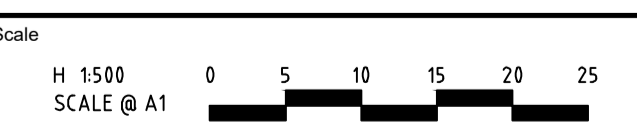
LINEMARKING LEGEND:

SYMBOL:	DESCRIPTION:	REMARK:
	ISLAND, SHOULDER & MEDIAN MARKINGS	SECTION 18.2 VICROADS TRAFFIC ENG. MANUAL VOL. 2
	PARKING & LANE LINE	100mm WIDE
	STOP LINE	LINE, 300mm WIDE
	HOLDING LINE (GIVEWAY)	600mm LINE, 600mm GAP, 300mm WIDE
	HOLDING LINE (ROUNDBOUT)	600mm LINE, 600mm GAP, 400mm WIDE
	CONTINUITY LINE (MEDIAN OPENING)	600mm LINE, 600mm GAP, 150mm WIDE
	CONTINUITY LINE (STANDARD)	1m LINE, 3m GAP, 100mm WIDE
	CROSSWALK LINE (BROKEN LINE)	1m LINE, 300mm GAP, 150mm WIDE AS1742.14 CLAUSE 6.2.2
	BI-DIRECTIONAL RRPM	SECTION 19.1 VICROADS TRAFFIC ENG. MANUAL VOL.2
	UNI-DIRECTIONAL RRPM	SECTION 19.1 VICROADS TRAFFIC ENG. MANUAL VOL.2
	TACTILE GROUND SURFACE INDICATORS	SECTION 21.1 VICROADS TRAFFIC ENG. MANUAL VOL. 2



file name: 308941CR800.dwg, layout name: CR800, created by: Outspan, Tereza, file location: G:\308941\308941.dwg, plot date: 17/01/2022, 14:01:48, Sheet 16 of 16 Sheets

Rev	Description	Approved	Date
A	ISSUED FOR APPROVAL	M.H	20/12/21
	Amendments		



System Certified

© Spiire Australia Pty Ltd All Rights Reserved
 This document is produced by Spiire Australia Pty Ltd solely for the benefit of and use by the client in accordance with the terms of the retainer. Spiire Australia Pty Ltd does not and shall not assume any responsibility or liability whatsoever to any third party arising out of any use or reliance by third party on the content of this document.

L6 414 LA TROBE STREET PO BOX 16084 MELBOURNE
 VICTORIA 8007 AUSTRALIA T 61 3 9993 7888
 spiire.com.au ABN 55 050 029 635

Designed: O.TRAORE
 Authorised: M.HOLMES
 Checked: []
 Date: DECEMBER 2021

SEVENTH BEND
STAGE 10
 ROAD AND DRAINAGE
 SIGNAGE AND LINEMARKING
 MELTON CITY COUNCIL
 EXFORD ROAD MANAGEMENT PTY LTD

PRELIMINARY

Drg No: **308941CR800** Rev: **A**